

COPENHAGEN CITY  
OF ARCHITECTURE

# COPENHAGEN CITY OF ARCHITECTURE

THE ARCHITECTURE POLICY OF THE CITY OF COPENHAGEN



**COPENHAGEN  
TOGETHER**

CITY OF COPENHAGEN  
The Technical and  
Environmental Administration



# COPENHAGEN CITY OF ARCHITECTURE

THE ARCHITECTURE POLICY OF THE CITY OF COPENHAGEN



# CONTENTS

# INTRO

- 04 Preface
- 08 Introduction

## 01 CHARACTER

WE WANT TO STRENGTHEN THE CHARACTER OF COPENHAGEN BY MEANS OF BOTH PRESERVATION AND DEVELOPMENT

- FOCUS AREAS/
  - 14 Urban transformation
  - 18 Cultural heritage
    - City on a human scale
    - The city's skyline
  - 20 City on the waterfront
    - City lights

- INITIATIVES/
  - 24 Development and preservation through local planning
  - 26 Collection of examples of cultural environments
    - Urban renewal
    - Integrated urban renewal
  - 28 Design policy
    - Lighting
  - 30 HERE AND NOW

## 02 ARCHITECTURE

WE WANT TO PROMOTE SUSTAINABLE ARCHITECTURE THAT ADDS NEW QUALITIES TO THE CITY'S CONNECTIVITY AND ENVIRONMENTS

- FOCUS AREAS/
  - 34 The city on every scale
    - Buildings and places
  - 38 Urban density
    - Urban openness and flexibility
    - Urban diversity
  - 40 Environmental solutions
    - Urban connectivity

- INITIATIVES/
  - 44 Local planning and the processing of building applications
    - Flexible architectural solutions
  - 46 Architectural quality in housing
  - 48 High-rise buildings
    - Evaluations
  - 52 HERE AND NOW

## 03 URBAN SPACES

WE WANT TO CREATE URBAN SPACES AND URBAN LANDSCAPES OF A HIGH ARCHITECTURAL QUALITY TO ENCOURAGE DIVERSITY IN URBAN LIFE

- FOCUS AREAS/
  - 56 Urban life
    - Urban spaces
  - 58 Urban landscapes
    - Urban water areas
    - Urban development areas

- INITIATIVES/
  - 62 Urban space planning
    - Urban life scoreboard
  - 64 Lighting strategy
    - New parks
    - Pocket parks and green links
  - 66 HERE AND NOW

## 04 PROCESSES

WE WANT TO DEVELOP AND FACILITATE PROCESSES THAT ENSURE ARCHITECTURAL QUALITY AND SUSTAINABLE SOLUTIONS

- FOCUS AREAS/
  - 70 Urban sustainability
    - Architectural challenges
  - 72 Urban architectural competitions
    - Architectural advisors
    - Architectural debates
    - Networks and cooperation

- INITIATIVES/
  - 76 Sustainability in construction and urban development
    - Programming
  - 78 Competitions
    - The talent base
  - 80 Architecture awards
    - Theme booklets on architecture policy Copenhagen X
    - Networks and cooperation
  - 82 HERE AND NOW

## APPENDIX

- 85 Policies, strategies and guidelines
- 86 Photos & illustrations



## PREFACE/

Klaus Bondam

Mayor, Technical and Environmental  
Administration 2006-9

Bo Asmus Kjeldgaard

Mayor, Technical and Environmental  
Administration 2010-

Today, Copenhagen is a beautiful and well-preserved city. Like other capitals it has its own unique appearance based on history and the character of the location. The city is rich in architectural and landscape highlights that are rightly praised by many – also around the world. But the city surely also has areas where the architectural qualities are not exactly striking. And the city is in need of ongoing renewal – among other reasons in order to live up to crucial future climate requirements.

Buildings, urban spaces, and urban landscape elements should be developed sustainably and with an insistent focus on creating a setting for an urban culture characterised by diversity, activity, motion and experiences – a meeting place for people.

And naturally, as the City of Copenhagen now sets out to renew its architecture policy, the vision of putting human and environmental concerns first is paramount. Thus, the architecture policy should help specify and expand on some of the visions that were presented in *A Metropolis for People* and *Eco-Metropolis*.

Over the past 10-15 years, Copenhagen has developed completely new neighbourhoods. We are currently transforming many former industrial sites, such as harbour, railway and stock areas and production facilities, to new neighbourhoods. These areas have taught us the key importance of taking a broad approach to architecture and planning.

Building architects, urban planners, landscape architects or urban life experts cannot take on the task on their own. We need all their perspectives to create an economically, environmentally and socially sustainable city. This is true, whether we are working on entirely new neighbourhoods, major conversions or minor adaptations and renewals in the existing city.

Despite the bleak economic outlook, we expect continued extensive construction activity in Copenhagen in coming years. Workplaces relocate to Copenhagen, and a growing number of people wish to live in the city. We need new homes, day care facilities, schools, sports facilities, parks and green areas, and private companies, sports and culture activities are placing new demands on the physical environment. We also continue to have a great need for urban and neighbourhood renewal.

We are already well into a century that poses completely different challenges than the ones we have faced in the past. That places new demands on architecture and on our overall approach to the development, renewal and preservation of Copenhagen.

All these factors set the stage for a new architecture policy that converts the trends to direction and new goals for our work with the city's architecture. The main objective of the architecture policy is to facilitate the dialogue with building clients, architects, planners and landscape architects about plans and projects, but in addition, it should offer anyone interested in the urban architecture and spaces an insight into the key goals and focus areas of the City of Copenhagen.





In the foreground, typical Copenhagen allotment gardens; in the background, along the harbour front, the characteristic low, red buildings of Bådklubben Valby (Valby Boating Association), now supplemented by the modern waterfront housing blocks on Sluseholmen.







INTRODUCTION/  
Jan Christiansen  
City architect

In the Centre for Urban Design, the Technical and Environmental Administration, we have worked to develop a new architecture policy for the City of Copenhagen.

The City was also involved in shaping 'A Nation of Architecture – Denmark', a national architecture policy developed in 2007 by the Danish Ministry of Culture for the Danish government. Here, the City of Copenhagen is handed a major responsibility for implementing the national architecture policy, both in its role as public building client and as a planning authority.

'A Nation of Architecture – Denmark' encourages municipalities to take the lead and establish criteria for architectural quality and to devise their own architecture policies describing the city's visions, goals and requirements.

The architecture policy for the City of Copenhagen has four main sections, reflecting our four main goals:

**01 CHARACTER**

We want to strengthen the character of Copenhagen by means of both preservation and development.

**02 ARCHITECTURE**

We want to promote sustainable architecture that adds new qualities to the city's connectivity and environments.

**03 URBAN SPACES**

We want to create urban spaces and landscapes of a high architectural quality that encourage diversity in urban life.

**04 PROCESSES**

We want to develop and facilitate processes that ensure architectural quality and sustainable solutions.

All four goals involve themes and objectives that we should pursue to become a world-class city of architecture. We will not only focus on individual buildings but consider the city as a whole and strive to ensure that quality housing and urban spaces remain a characteristic of Copenhagen.

The four sections describe the efforts needed to accomplish the goals: the methods, processes and types of cooperation required in the democratic context that a municipal administration is embedded in. Some of these efforts are already a part of our daily practice, but we have decided to add new initiatives to be launched here and now in order to reach our goals. Thus, here and now, we will launch initiatives to explore and develop the character of Copenhagen, sustainable architecture and urban spaces and landscapes in the urban development areas.

Today, the challenge is to preserve and develop Copenhagen's architecture in a complex society with a very advanced democracy.

Along with the publications listed in the appendix, Copenhagen City of Architecture offers guidelines for urban development and the processing of building applications. The debate about architectural quality must take place on every level, from strategic planning over building and landscape art to design.

The architecture policy is aimed at planners and stakeholders in the construction industry and at the citizens of Copenhagen. Without a broad aim and citizen involvement in the process of city building, we will fail to achieve the sublime.





The Copenhagen skyline in 1750  
- here viewed from Vesterbro.



The Copenhagen skyline in 2009  
– here viewed from Kløvermarken –  
is a key element in understanding  
the character of Copenhagen.

# 01 CHARACTER

## WE WANT TO STRENGTHEN THE CHARACTER OF COPENHAGEN THROUGH BOTH PRESERVATION AND DEVELOPMENT

Copenhagen has a strong character. The city's profile with the green spires and turrets, the tile roofs and the proportions and diversity of the urban spaces has a Nordic and uniquely Copenhagen feel. The visible historical layers, the green structure and the jagged coast line are key features. And the city's relationship with the water combined with the scale of the urban spaces produces a unique atmosphere. These features create a character that is to be preserved and developed in the future with particular attention to the historical and architectural qualities that already make Copenhagen unique.

Copenhagen should continue to be a well-preserved city that embraces new elements of a high architectural quality and a contemporary expression that highlight the city's scale and identity. Thus, new architecture and new urban spaces should match the character of Copenhagen. New neighbourhoods should be world-class, but Copenhagen has no intention of simply copying European models. The world-class level should be achieved by means of a modern interpretation of the spirit of place.

By continually expanding our building culture with new architecture that interprets and renews the city's character in a modern idiom we keep our cultural heritage alive. The city and its buildings should form a contemporary setting for modern Copenhageners' lives. New urban development areas, urban spaces, parks, buildings and conversions should contribute to a diverse urban life embedded in the finest principles of sustainability.

Thus, we should focus on architecture when buildings and areas are converted to new purposes. Conversions have a rich potential in juxtaposing new and old; this provides inspiration for new functions and creates new spatial conditions. One example of this process is the conversion of industrial and harbour areas to new and more functionally diverse urban neighbourhoods with homes, trade and industry.





” Both historical qualities and modern architecture help define the identity of the new areas

## FOCUS AREAS/

URBAN TRANSFORMATION

CULTURAL HERITAGE

CITY ON A HUMAN SCALE

THE CITY'S SKYLINE

CITY ON THE WATERFRONT

CITY LIGHTS

### Urban transformation

The master plan for Copenhagen is to continue the development from an industrial and harbour city to a modern, sustainable metropolis for people. The transformation of former stock, industrial and harbour areas to new functions in urban structures and landscapes involves building architecture as well as urban spaces and landscaping in order to achieve the best architectural results. Both historical qualities and modern architecture help define the identity of the new areas. In many cases, buildings constructed for one purpose can provide a new and unusual setting for a very different set of functions. In some cases, existing building structures that are scheduled for demolition may have temporary value and be a tremendous asset for an area.

#### Spinderiet Valby

Architect: AK83

Completed: 2007

This former spinning mill in Valby is an example of the conversion of a former industrial area to new urban functions. Shops, homes and cultural facilities have given Valby a new meeting place.









01



02



03

**01  
105 Østerbrogade**

Architect: C.F. Møller Architects  
Completed: 2007

The city centre and the surrounding neighbourhoods of Vesterbro, Nørrebro and Østerbro are characterised by building blocks that are up to six storeys high with a mix of functions. The residential complex on 105 Østerbrogade is a contemporary example that extends this structure and interprets it with respect for scale and materials.

**02  
Motortorpedobådshallen**

Architect for conversion: Tegnestuen Vandkunsten  
Completed: 1952, converted 2002

Holmen features many examples of the cultural heritage being kept alive, and historical and architectural qualities are preserved as facilities are developed and converted from one function to another; in the case of the motor torpedo boat hall, from shipyard to homes.

**03  
Sluseholmen**

Master plan: Soeters Van Eldonk  
Architectural coordination: Arkitema and Grøning Arkitekter

The Copenhagen block structure combined with the familiar qualities of the canal area. On Sluseholmen, architectural variation and flexible ground floors are key elements in establishing a varied neighbourhood.



04

**Jorcks Passage**

Architect: Vilhelm Dahlerup  
Completed: 1897

Copenhagen has few passages in the old sections of the city. More are probably coming, and here, Jorcks Passage can serve as a spatial and aesthetic model.

05

**Buen ved Vesterport**

Architects: Thorvald Dreyer, Ib Lunding and Ole Hagen  
Completed: 1956

The second or third breakthrough for Modernism in Copenhagen: The arch, the SAS Hotel and the urban spaces along the railway cuttings are magnificent urban spaces that are now part of the Metropolitan Zone. The arch is an interpretation of the passage on a scale befitting the motoring city.



04



05

### Cultural heritage

As the nation's capital, Copenhagen has a national responsibility for preserving its cultural heritage. Many of Denmark's listed and preservation-worthy buildings are located in Copenhagen. Managing this building culture is a challenge but also a big asset for the city. Copenhagen has its own unique history and architecture. Another key aspect of the city's cultural heritage is green structures and landscaping, such as the fortification ring, the commons and the exterior park ring. Transforming and preserving these qualities help strengthen the character of Copenhagen and create new recreational possibilities.

### City on a human scale

Landscaping and architectural solutions should incorporate Copenhagen's character on every scale, from urban development areas, urban spaces and landscaping to buildings and design. We should continue to develop the Nordic, Danish and Copenhagen architectural approach with its humanistic ideals. New urban areas should reflect the Copenhagen character and the human scale of its urban spaces, which contributes to the city's special atmosphere.

### The city's skyline

A key Copenhagen feature is the uniform building height, interrupted by spires, turrets and domes. The urban development plan generally maintains this in the old parts of the city, where the many listed and preservation-worthy buildings and cultural environments form an essential part of the city's appeal and identity. Thus, the placement and design of new buildings that exceed 3-6 storeys must consider the traditional skyline and other key urban architectural features such as the harbour and the urban topography.

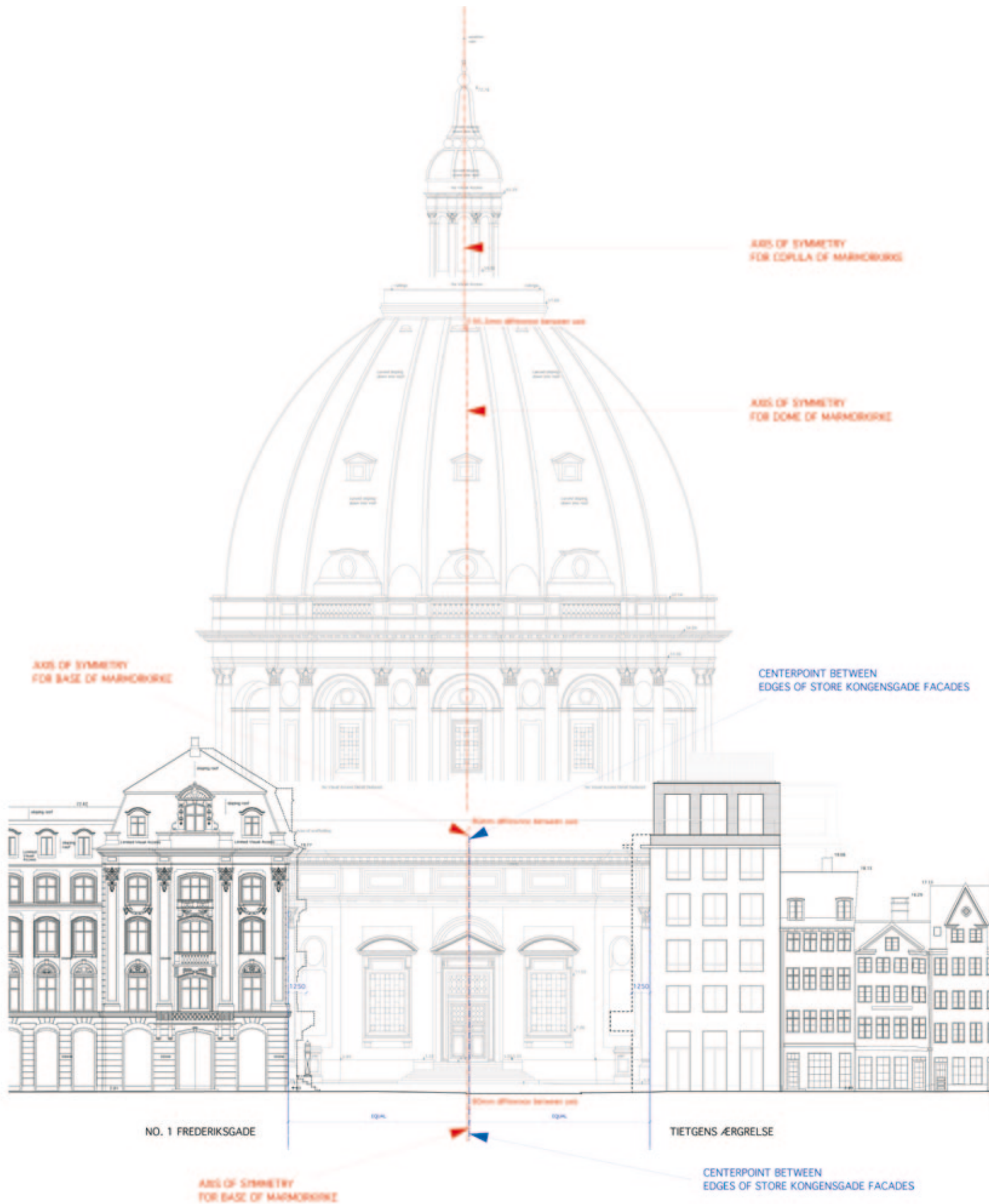
**” New urban areas should reflect the Copenhagen character and the human scale of its urban spaces**

#### Tietgens ærgelse

Architect: Tony Fretton

Expected completion: 2010

*Tietgen's ærgelse* (Tietgen's frustration) is the nickname the Copenhageners coined for the site that 19th century tycoon Tietgen was never able to build on, which undermined his grandiose urban development plan for Marmorkirken (Marble Church) and the Amalienborg axis. The English architect Tony Fretton's simple approach to the task is permeated by respect for the location and for Copenhagen while offering a contemporary interpretation of both the Classicist and Baroque features in the cityscape.





### **City on the waterfront**

The transitions between the city and the water are a key feature in the character of Copenhagen. Hence, the harbour and coast areas, canals and quays and the characteristic inlets should be highlighted and given an architectural expression. It is important to create recreational activities with architectural, urban and aesthetic qualities along the waterfront. Piers should be refined to ensure a high level of architectural quality, whether they are seen from land or from sea. Both the body of water and the promenades should be architecturally linked to the rest of the city and the harbour.

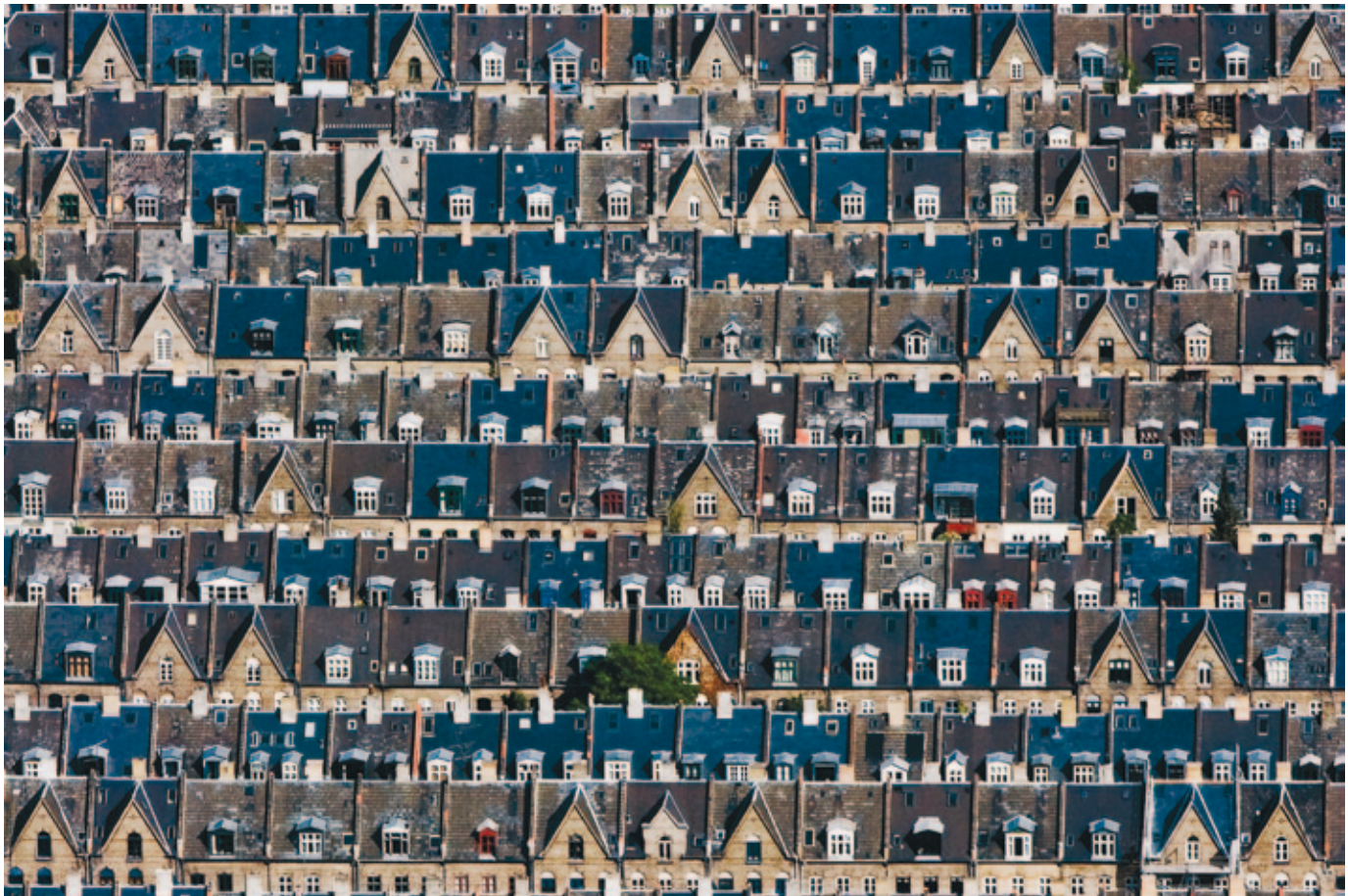
### **City lights**

Light helps bring out the city's unique identity. The northern latitude gives us the twilit summer nights, the long winter nights, the soft, gentle light and the many shades of twilight. The waterfront location adds another layer through the reflections that glimmer in rooms and façades. The architecture must address these light conditions and aim to highlight the city's Nordic tradition through requirements for daylight conditions and by means of night-time lighting.





Safety concerns and maintaining a distinction between night and day are key issues in Copenhagen. Urban life cannot be equally intense everywhere, and empty spaces may hold important urban space qualities.



#### **Kartoffelrækkerne**

The city centre and the surrounding neighbourhoods Vesterbro, Nørrebro and Østerbro are predominantly characterised by building blocks up to 6 storeys high, but the so-called Potato Rows illustrate that the city also has local neighbourhoods with their own unique character.

#### **The Lakes**

The blue lake ring helps cast Copenhagen as a waterfront city with unique recreational possibilities.







## INITIATIVES/

DEVELOPMENT AND PRESERVATION  
THROUGH LOCAL PLANNING

COLLECTION OF EXAMPLES OF  
CULTURAL ENVIRONMENTS

URBAN RENEWAL

INTEGRATED URBAN RENEWAL

DESIGN POLICY

LIGHTING

### Development and preservation through local planning

Local development plans define architectural requirements for new neighbourhoods and construction. Local plans always include requirements for architecture and urban spaces based on local potentials and qualities. In developing areas that contain important features in terms of architectural quality or cultural history, the City can use local development plans to identify buildings and landscape elements as preservation-worthy. Thus, original architectural qualities or essential aspects of our cultural history can be managed and preserved in connection with new constructions, renovation or conversions to new purposes.

Big urban development projects such as Carlsberg, Valby and Nordhavn involve a close dialogue between the City, building clients, consultants and relevant authorities. The common goal is to create outstanding new neighbourhoods while preserving buildings and urban spaces that hold special qualities and exemplify Copenhagen's industrial culture. These are listed as preservation-worthy in the local plans but may be converted and developed in close collaboration with the authorities. Thus, the cultural heritage of the industrial era helps develop the character of Copenhagen and link the new neighbourhoods architecturally and historically to the existing city.

To preserve features or elements of particular cultural history or architectural value in certain areas, the City of Copenhagen may draw up special local plans.

#### Carlsberg

A former industrial site that is being converted to serve new functions: homes, cultural activities, sports and business. The existing architectural qualities are exquisite. They are preserved and developed in the renewal process.





### Collection of examples of cultural environments

In relation to the new urban development plan, the City of Copenhagen is establishing a collection of examples that support the effort to identify cultural environments. The collection will include examples from the large urban development areas, highlighting preservation-worthy cultural environments in these areas and their architectural potential. The Heritage Agency of Denmark and the Museum of Copenhagen will be involved in assembling the collection, which will include individual buildings as well as buildings that are part of a preservation-worthy context. The collection will also include examples of other preservation-worthy facilities and landscapes.

### Urban renewal

A key element in preserving a living building culture is to modernise the city's buildings to make them attractive as homes, businesses and institutions. Through extensive urban renewal, large sections of the city have been renovated and installations brought up to date. In extension of this urban renewal effort that also served to develop and preserve the existing architectural qualities, the city has developed an urban renewal strategy. The new urban renewal strategy for Copenhagen will continue the efforts to protect architectural qualities with an added emphasis on environmental sustainability.

### Integrated urban renewal

In cooperation with the State, the City of Copenhagen continues to carry out neighbourhood renewal projects with a dual emphasis on social and physical aspects. The effort relies on neighbourhood plans based on extensive citizen dialogue. Both the citizen dialogue and the emphasis on physical improvements have been and will continue to be key instruments. Architectural and urban space quality helps bolster identity and establish physical and cultural beacons in these neighbourhoods.

Several of the completed projects have subsequently won awards from the City of Copenhagen as outstanding works of architecture, urban spaces and parks.

01

#### Emaljehaven

Rentemestervej  
Architect: Entasis  
Completed: 2007

Emaljehaven is an example of modern Danish housing, where the attention to detail makes a strong contribution to the overall architectural quality. As in the other two examples, it is the repetition of the elegantly designed balcony that creates the unique character of this building.

02

#### VM husene

Ørestad  
Architect: PLOT  
Completed: 2005

The VM Houses in Ørestad show clear references back to the golden era of Danish residential architecture in the 1930s and 40s. Here, the element of repetition is supplemented with variation in form and rhythm.

03

#### Vestersøhus

Vester Søgade  
Architects: Kay Fisker and C.F. Møller  
Completed: 1939

The balcony/oriel façade is said to be Denmark's only typological contribution to world architecture.





01



02



03



### Design policy

Through design policy and design manuals the City of Copenhagen seeks to preserve and develop the character of Copenhagen as expressed in the furnishing, pavements and plants in our urban spaces. A new design policy will establish guidelines as to when the city's general character should be maintained, and when other solutions might be appropriate that highlight a more local character. In either case, sustainable and durable solutions should be selected to ensure that the urban spaces can be operated and maintained in a responsible manner.

### Lighting

The treatment of daylight is a key feature of architecture and of the qualities created both indoors and out. Hence, there are requirements for daylight conditions in homes and workplaces as well as open and urban spaces.

Artificial lighting is also important in Copenhagen, where much of the year is quite dark. Lighting promotes safety, and the importance of Copenhagen's reputation as a safe city can hardly be overestimated. The City of Copenhagen has developed the lighting strategy *Natten i byens lys*. Basic lighting should promote safety, coherence and accessibility in the city in an environmentally sustainable and resource-efficient way. Architectural lighting should be used to shape the city at night. Lighting should be used thoughtfully to enhance urban life and highlight the city's identity, architecture and details. Night should remain night and should not mimic the day.

### Havneholmen

Unlike buildings and urban spaces in the old sections of the city, modern architecture often uses lighting as an integral part of the main concept and rarely requires later additions. In newer buildings and urban spaces it is possible to tell other architectural stories at night.



## HERE AND NOW/

We will develop a method for analysing and describing the character of Copenhagen and its neighbourhoods. We will use the method in planning and assessing future projects in relation to local framework plans, local plans and major construction projects. This will facilitate a fruitful and constructive debate about the character of the city and the ability of the projects to renew and enrich this character.







## 02 ARCHITECTURE

### WE WANT TO PROMOTE SUSTAINABLE ARCHITECTURE THAT ADDS NEW QUALITIES TO THE CITY'S CONNECTIVITY AND ENVIRONMENTS

The City of Copenhagen wishes to promote architectural and technical quality in a contemporary expression that takes an aesthetic, functional and urban approach to its surroundings and the users' needs. A parallel goal is to promote environmental, social and economic sustainability. Buildings, urban spaces and landscapes should interpret the urban context conceptually and aesthetically and provide functional, accessible and sustainable settings for Copenhageners.

In relation to the existing city, urban development areas have more freedom to pursue architectural ideals that reinterpret the character of Copenhagen in sustainable and effective solutions. The City of Copenhagen wants to promote initiatives that involve experimental architecture and urban spaces that help the new areas develop a sense of identity.

Variation is an important element in the architectural experience. Architectural expression also helps give the individual building or complex a distinct identity. On the other hand, it is not a goal in itself that every single building or urban space should stand out. In its planning efforts, the City of Copenhagen wants to help ensure architectural diversity within the larger character of a given area.

Attractive urban spaces and clear links to the existing city are essential for promoting urban life in new areas. Hence, the architecture and the individual buildings should follow an overall plan for the surrounding urban spaces based on clear ideas about the sort of urban life the given area should promote. Urban development areas should be characterised by dense, urban architecture. Greater density and a higher concentration of functions provide a better basis for urban life in the individual neighbourhoods and for architectural diversity.



S16

S15

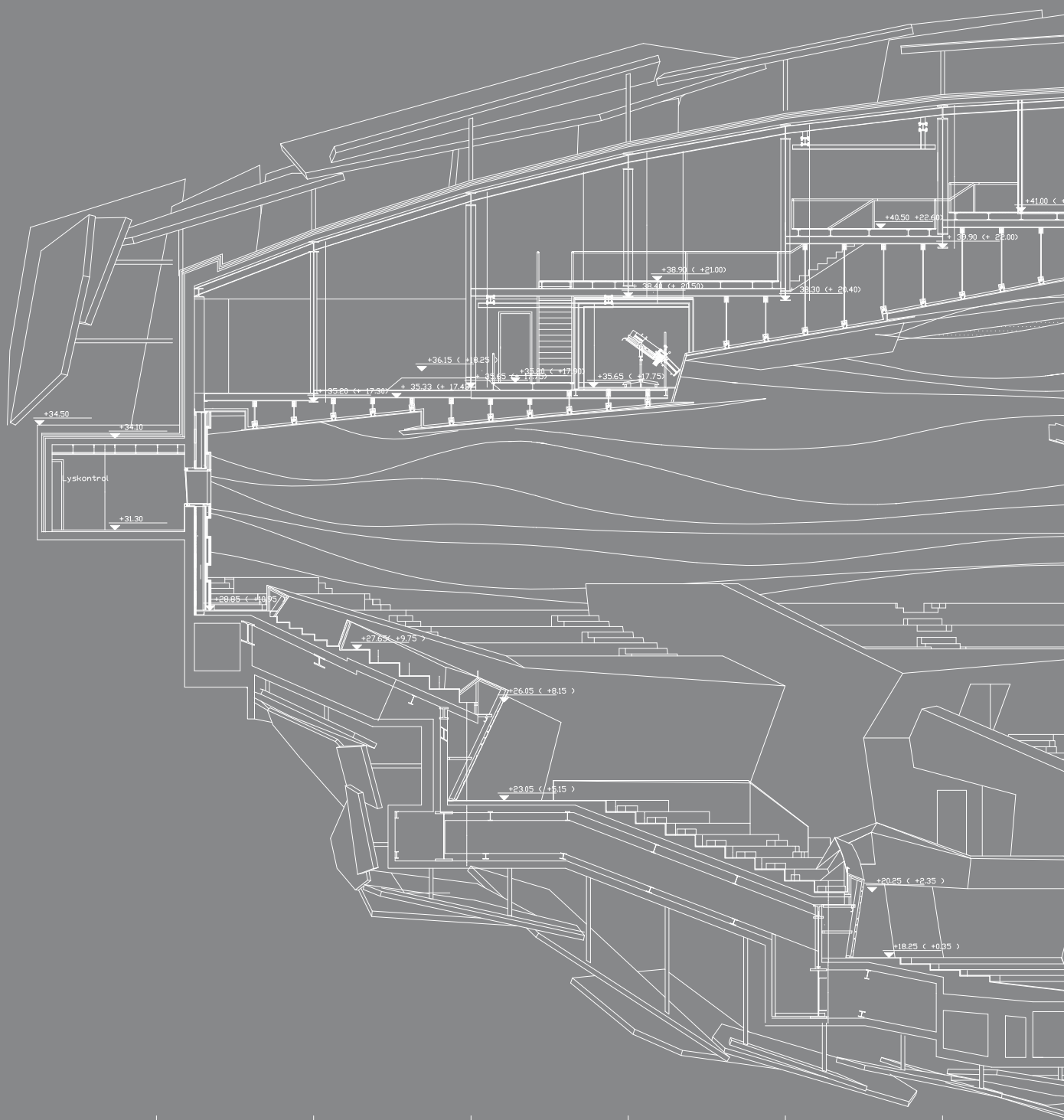
S14

S13

S12

S11

S10



**FOCUS AREAS/**

THE CITY ON EVERY SCALE

BUILDINGS AND PLACES

URBAN DENSITY

URBAN OPENNESS AND FLEXIBILITY

URBAN DIVERSITY

ENVIRONMENTAL SOLUTIONS

URBAN CONNECTIVITY

## ” The City of Copenhagen strives for the highest possible architectural quality on every scale

**The city on every scale**

The City of Copenhagen strives for the highest possible architectural quality on every scale that is developed conceptually, aesthetically and functionally in relation to the existing context. Compared with the existing city there should be more freedom to pursue new architectural ideals in the urban development areas, where experimental architecture can help build identity. Similarly, urban landscapes develop through constant experimentation, as the interaction between landscape and buildings, the transitions between indoors and out, the shape of urban spaces, and the transitions to the open land are re-examined.

**Buildings and places**

Buildings define the urban space and frame urban life while also forming the settings for our homes, work, education and recreation. The City of Copenhagen is mainly interested in the effect of the buildings on the city and less interested in indoor conditions. However, the City does have a long tradition for working with high-quality residential architecture in subsidised projects. Here, we will continue to pursue architectural quality in the individual home as well as the buildings and their urban contexts.

**The Royal Danish Playhouse and the Opera House**

Left: The Royal Danish Playhouse  
Architect: Lundgaard & Tranberg Architects

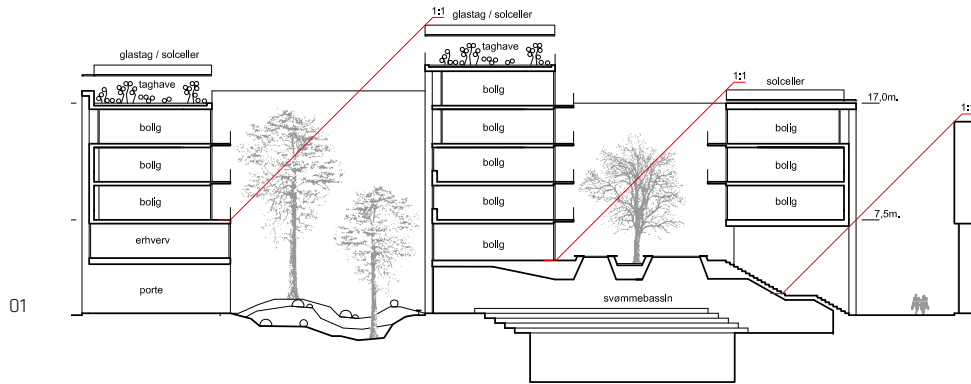
Completed: 2007

Right: The Opera House  
Architect: Henning Larsen  
Completed: 2004

The major cultural buildings in the harbour – the new Royal Danish Playhouse and the Opera House – address the scale of the harbour space and add new qualities that are underscored by the lighting.







01 Experiments with urban density in the Carlsberg site. Spacing and privacy are crucial, and the functions are strategically placed - homes on top and businesses on the lower floors.

02 Schematic representation of the open urban spaces in modern planning, here visualised as a park complex.

03 Schematic representation of the traditional urban ideal, the dense city with well-defined squares and urban spaces, that is the model for the urban development at Carlsberg.

04 Like Bellahøj in the north, Carlsberg and Valby Bakke will have their own distinct profile in the Copenhagen skyline.



**Carlsberg**

Architect: Entasis  
Competition 2008

The conversion of the Carlsberg brewery site to a new neighbourhood with homes, businesses, public services, sports and culture was the topic of an open international architectural competition with more than 200 entrants. A Danish firm won with a distinctly urban project that is almost a reinterpretation of the urban ideals of the Renaissance adapted to modern-day Copenhagen. The project and its realisation experiment with urban density and combine homes and businesses.

04







05

05/06  
**8 House**  
 Architect: BIG  
 Expected completion: 2010

**Ørestad South**  
 Architects: BIG, Vandkunsten, Vilhelm Lauritsen, Entasis, Skodvin & Jensen and others  
 Under construction  
 New experimental forms of housing and outdoor spaces. The block structure in the local plan is interpreted freely in new types of multi-storey buildings, terraced houses, increased density and high-rise buildings.

06

**Urban density**

Dense urban structures pose a particular architectural challenge. As one purpose of density is to promote urban life, the architecture should promote people's desire and ability to use the areas. The buildings should have access to good recreational possibilities, but the key is quality, not quantity. Thus, urban spaces should be proportioned and designed with great care. Intimate spaces and good daylight conditions are a challenge for architecture, and only some buildings and building sections should exceed the familiar Copenhagen scale.

**Urban openness and flexibility**

New buildings and complexes should have an open and inviting architecture and promote accessibility, tolerance and diversity. New structures should also not be too conceptually rigid. As illustrated by the older industrial architecture in the urban conversion zones, many architectural qualities are maintained even if the functions change over time. A similar potential for flexibility should be built into the architecture of the future.

**Urban diversity**

Diversity is a general goal in the planning for the City of Copenhagen and pursued in the dialogue with building clients. Neighbourhoods should facilitate the co-existence of many different population groups. Here, architecture plays a key role. Urban neighbourhoods should be highly accessible with a clear hierarchy of buildings and urban spaces. They should have a varied architectural expression to provide character and a local identity. There should be homes for residents of different ages and lifestyles. Urban spaces should feel safe, with clear and pleasant transitions between private and public space. And the architecture should provide open and inviting places for people to meet and spend time.

**” New buildings and complexes should have an open and inviting architecture and promote accessibility, tolerance and diversity**

**” ... urban spaces should be proportioned and designed with great care**

**” Neighbourhoods should facilitate the co-existence of many different population groups. Here, architecture plays a key role**





01

**01**  
**Gårdlauget Nøjsomheden**  
 Architects: The City of Copenhagen  
 and Grønne Gårde  
 Award: 2008  
 For three decades, the City of  
 Copenhagen has spearheaded  
 an effort to convert dull and  
 cramped courtyards into enriching  
 green environments that form  
 attractive settings for families  
 and communal activities.

**02**  
**Housing on Sluseholmen**  
 Façade architect: Arkitema  
 The corners of the building blocks  
 have an additional storey that en-  
 able communal out-reach activi-  
 ties. They also add an interesting  
 element to the architecture on  
 Sluseholmen.



02

**03**  
**Multi-purpose lot on Nørrebro**  
 Architect: Morten Wassini  
 Completed: 2004  
 The street Skt. Hans Gade in the  
 the Nørrebro neighbourhood now  
 features a small and very func-  
 tional urban space. New ways of  
 moving and new types of sports  
 can unfold here in an original  
 venue that constantly tickles the  
 imagination.



03

### Environmental solutions

Through visionary solutions buildings, urban spaces and landscape architecture should support Copenhagen's ambition of being the world's environmental metropolis by 2015. Climate issues are a key concern, and new neighbourhoods and buildings should match the highest possible low-energy standards. Environmentally sound materials, local recycling of rain water, green roofs, good waste management solutions, and noise reduction should all be natural elements in contemporary architecture. Streets, squares and connections throughout the city should encourage the citizens to bike or walk instead of driving; that requires thoughtful architectural planning of urban spaces and good innovative solutions, for example with regard to bicycle parking.

It should also be possible to extend the use of renewable energy sources in and around Copenhagen. For example, windmills placed with thoughtful concern for the urban architecture may add a sustainable element to the city's profile.

### Urban connectivity

Urban development should be guided by coherent plans that allow for both architectural and functional variation and secure architectural diversity within the larger context and character of an area. In the urban development areas, an essential aspect is an architectural treatment of the links that connect the development areas with the existing city to prevent isolation.

**” ... new neighbourhoods and buildings should match the highest possible low-energy standards**





02



01



03

01

**Left: Wennberg Silo**

Architect for the conversion:  
Tage Lyneborg  
Completed: 2004

**Right: Seed Silo**

Architect for the conversion: MVRDV,  
The Netherlands/JJW Arkitekter  
Completed: 2005

The harbour area was previously characterised by large industrial buildings, and the city has sought to preserve the best examples of the industrial cultural heritage on the site. In case of the silos on Islands Brygge this effort led to two tall buildings. High-quality experimental architecture was a requirement.

02

**Havneholmen**

Architects: Lundgaard & Tranberg  
Completed: 2008

Part of the area on Havneholmen features a very sculptural residential complex that not only creates fine terraced homes but also offers unique outdoor areas that address the water.

03

**Windmills by Amager Beach**

Windmills have become part of Copenhagen's modern-day profile and one of the first things that visitors to the city encounter when they arrive by plane, by boat or via the bridge from Sweden.





#### Christiansbro and Teglhølm

Left.: Nordea headquarters  
 Architect: Henning Larsen Architects  
 Completed: 1999  
 Right: Sømærk  
 Architect: Tegnestuen Vandkunsten  
 Completed: 2008

The warehouse type has served as a model for many constructions on the harbour front. Here, Christiansbro in the Inner Harbour and Sømærk in Teglværkshavnen both take advantage of the waterfront access and view offered

by the perpendicular position. Both projects take an original approach to the urban space. In Nordea Bank, the areas between the wings of the buildings are discreetly exposed with a varied use of plants and a varied topography. Both structures draw attention to the larger spatial features of the city in the careful effort to place the steeples in the two viewing points.



## INITIATIVES/

LOCAL PLANNING AND THE PROCESSING  
OF BUILDING APPLICATIONS

FLEXIBLE ARCHITECTURAL SOLUTIONS

ARCHITECTURAL QUALITY IN HOUSING

HIGH-RISE BUILDINGS

EVALUATIONS

### Local planning and the processing of building applications

In local planning processes and the administration of local plans in relation to specific building projects, a close dialogue with building clients and consultants ensures the architectural quality. In larger urban development areas, multiple clients will often be involved in the implementation.

It is important to ensure holistic plans that transcend individual building sites. The city aims to ensure that the necessary analyses are carried out, in some cases as one overall plan for an urban space. This plan should secure urban qualities such as diversity and variation as well as functional and architectural consistency.

### Flexible architectural solutions

New architecture should be adaptable to future requirements. The City of Copenhagen can require a certain degree of architectural quality and flexibility in solutions. Sometimes planned conversions are included in local plans, for example in requirements for ground floor levels that can be converted from residential to business purposes. Sluseholmen features one-and-a-half-storey ground floors with important architectural qualities as homes that can be converted into functions that are open to the public.

#### Metropolis

Architects, Metropolis: Future Systems  
and Kasper Danielsen Arkitekter A/S  
Completed: 2008

Metropolis is the name of the 11-storey residential building that is intended as a landmark for the entire southern harbour of Copenhagen. The building is the result of a competition between British architects who have made a name for themselves with waterfront buildings. The architecture has a very organic expression that relates to the coast line and the element of water.



### Architectural quality in housing

Historically, the City of Copenhagen has sought to ensure quality in residential architecture. This is evident in several parts of the city in exemplary buildings from various decades. The result of this endeavour is evident, for example, in the many projects that have been recognised throughout the years with municipal awards.

The City of Copenhagen is in close dialogue with the housing corporations in charge of much of the housing capacity in Copenhagen. The city co-funds and supervises subsidised buildings as one means of pursuing the goals of the City's architectural policy.

The effort to secure low-cost housing in Copenhagen and the associated architectural competition demonstrate that it is possible to build quality homes with architectural value at a moderate cost. These experiences have been incorporated into a new housing policy for the City of Copenhagen which includes an increase in subsidised housing. Environmental, social and economic sustainability will be the key condition in the housing policy, while the emphasis on architectural quality is maintained.

01

#### Karens Minde

Architects: ONV

Completed: 2008

On Thomas Koppels Allé in the southern part of Copenhagen a very simple housing concept has emerged based on a container technology, which offers good and functional low-cost homes. The architecture is minimalist with references to the best examples from the Danish tradition for row houses.

02

#### Atelierhusene

Architect: Viggo Møller-Jensen

Completed: 1943

On Grønnemose Allé we see a much earlier experiment with low-cost homes for artists. Today, the complex is a simple and clear monument to the qualities of Danish residential architecture.





01



02

### High-rise buildings

The urban development plan states that high-rise buildings in Copenhagen must be environmentally sustainable and architecturally unique. They should be placed with respect for the qualities of the city and the specific location with an emphasis on urban life and the local environment. The plan excludes high-rise buildings from certain sections of the old city. On this basis, an architectural guideline will be drawn up concerning the placement, adaptation and design of high-rise buildings in Copenhagen.

### Evaluations

Over the past decade, Copenhagen has undergone rapid urban development, particularly with regard to the architecture in the former harbour and industrial areas. In this process, new types of urban spaces and architectural experiments along with more familiar, modernist expressions have joined the preservation-worthy buildings that were fit for new purposes. The City of Copenhagen must evaluate these new areas to keep acquiring new knowledge about the architectural and planning instruments involved in the city's physical conversion. Therefore, the City has developed a method for evaluating both processes and preliminary results in the areas where the development process is complete. The method will continue to be developed and applied in all new neighbourhoods.

#### Amerika Plads

Master plan: Adriaan Geuze  
Buildings: Arkitema, Hvidt & Mølgaard  
A/S, Dissing+Weitling, C.F. Møller  
Architects, Lundgaard & Tranberg  
Architects

Expected completion: 2011

With new visions of height and density, this area manifests itself as a residential and business area in the former free port. Together with the preserved buildings, experimental architecture reinterpreting Copenhagen's building culture creates a distinct identity for the area. Amerika Plads is one of the first urban development areas to be evaluated by the City of Copenhagen, and although there are many successful aspects, there is still room for improvement, for example in creating a better link with the rest of Østerbro.









01



02

01

### The sports and culture centre Prismen (The Prism)

Architect: Dorte Mandrup  
Completed: 2006

An earlier, insensitive urban renewal project had left four "empty" gables in Holmbladsgade. Now, the gables frame a sports centre that forms an architectural transition between Holmbladsgade and the new park belt on Prags Boulevard. The building's multi-faceted and informal expression matches the tough character of the neighbourhood.

02

### Langelinie

Architects: Lundgaard & Tranberg  
Architects  
Competition entry 2009

The architecture of this new administration building on Langelinie, the result of an architectural competition by invitation, is inspired by the characteristic warehouses in Copenhagen Harbour. The proposal is a modern interpretation of a local typology with a functional approach that also applies to the placement of the windows.



03



04

03

**DR Byen**

Architect, overall plan: Vilhelm Lauritzen  
Completed: 2007

DR Byen in Ørestad is perhaps the biggest architectural assignment in Copenhagen in recent history. The result of an architectural competition by invitation, a roof-covered urban structure now forms a city within the city.

04

**The concert hall**

Architect: Ateliers Jean Nouvel  
Completed: 2009

The concert hall in DR Byen is a world-class masterpiece. The concept in the competition programme was the Berlin Philharmonie, and the influence was Jean Nouvel's great interest in Danish architecture, especially Vilhelm Lauritzen and Arne Jacobsen.



## HERE AND NOW/

We want to create sustainable solutions in existing neighbourhoods and new urban areas. Sustainability applies to environmental, economic and social dimensions. Therefore, we will develop a collection of examples of sustainable architecture in Copenhagen including neighbourhoods, urban spaces, buildings and landscape architecture.







## 03 URBAN SPACES

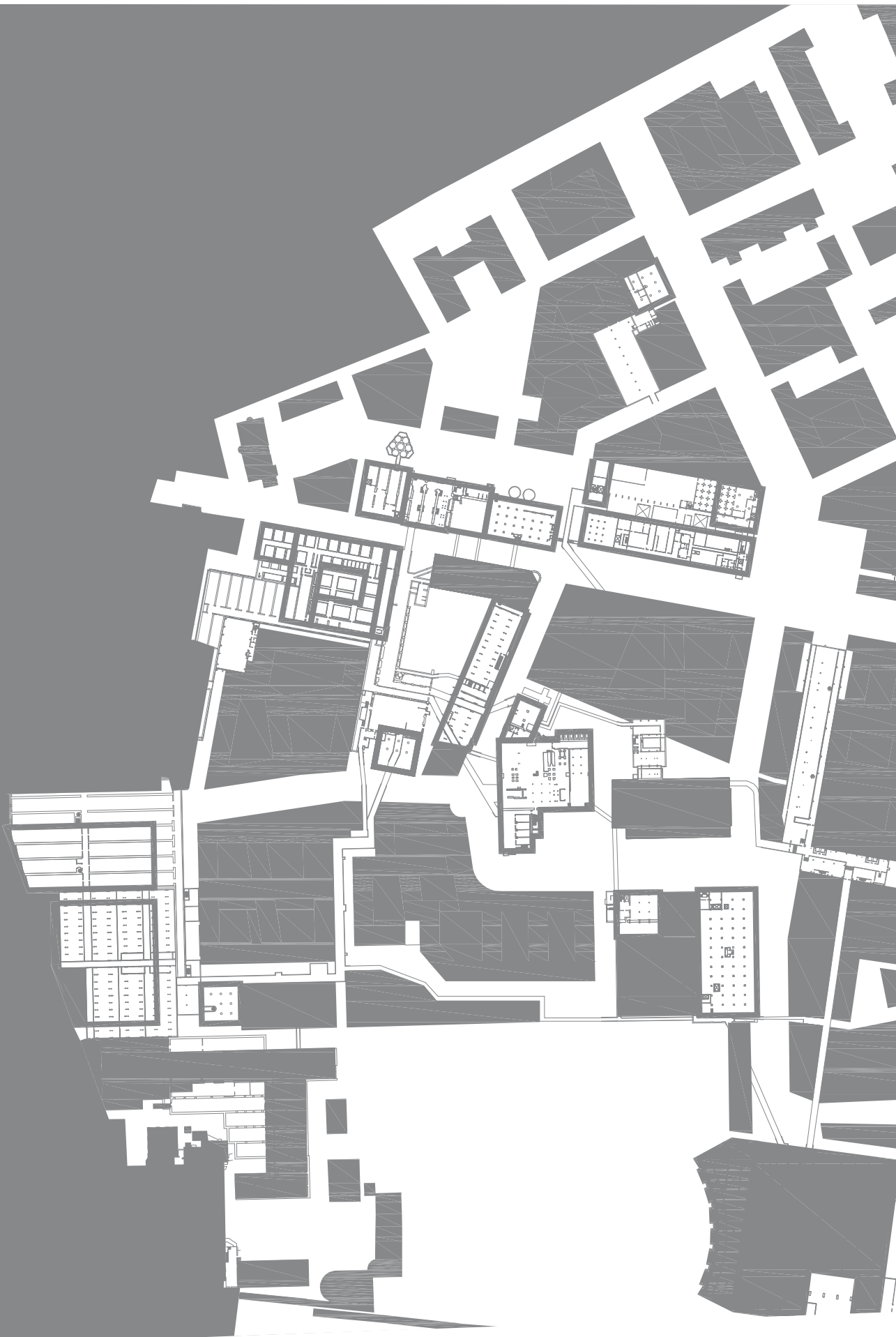
### WE WANT TO CREATE URBAN SPACES AND LANDSCAPES OF A HIGH ARCHITECTURAL QUALITY TO ENCOURAGE DIVERSITY IN URBAN LIFE

Copenhagen wants to be the world's best city to live in – a metropolis for people. Thus, in planning new urban spaces or converting existing ones, we aim to create spaces that encourage a varied and unique urban life. To pursue this vision, the City of Copenhagen has published *A Metropolis for People* with clear goals that set the course and define criteria for our efforts to improve urban life. We want to continue the development from the past ten years, where the good urban life has spread throughout the city, beyond the city centre.

Copenhagen is rightly known for its beautiful and well-designed urban spaces, and the City of Copenhagen will set the same high standards for urban spaces and landscapes as for buildings. The architectural concept for the urban space, the functional solutions and the aesthetics should promote the desired urban life. Thus, the visions for urban life and the urban space design should be in place before the design of the surrounding buildings.

Architectural quality, utility value and accessibility should characterise our urban spaces and recreational areas, not least the ones we use every day. Thus, the architectural development of urban spaces and parks should take place in open processes that involve residents and users. However, urban life in Copenhagen neither can nor should be equally intense everywhere. Architecture should create settings for intense urban life as well as more quiet areas. The urban space should have room for the beautiful, the offbeat and the temporary.

In urban planning, we draw on urban space research within the longstanding Danish tradition that has affected the city to an extent where planners around the world talk about 'copenhagenising'. We also have longstanding professional traditions in landscape architecture, which in the history and development of the city often provides the element that ties the city together or marks the transition to something new. The City of Copenhagen wants to give Copenhageners better access to parks and recreational areas.





**FOCUS AREAS/**

URBAN LIFE

URBAN SPACES

URBAN LANDSCAPES

URBAN WATER AREAS

URBAN DEVELOPMENT AREAS

**Urban life**

The City of Copenhagen wants to enhance urban life, and in *A Metropolis for People*, the emphasis is on three areas which together enhance conditions for urban life. Good conditions for pedestrians, good places to spend time, and a wide and varied range of possible activities and events in the urban space. Architecture and urban spaces should invite more people to stay longer, encourage more people to walk more, and provide more urban life for everybody.

**Urban spaces**

The City of Copenhagen wants for architecture and individual buildings to relate to a larger plan for the surrounding urban spaces. New urban spaces should expand the existing network and thus support urban connectivity. Urban spaces should encourage movement, activity and experiences. Therefore, we emphasise aesthetics, safety and comfort. Urban spaces should reflect a larger architectural concept that creates the desired settings conceptually, aesthetically and functionally, and which matches traffic needs and the functions and design of the surrounding buildings. It is essential to address the peripheral zones and the transitions between public and private space, where people can meet and spend time.

**” It is essential to address the peripheral zones and the transitions between public and private space, where people can meet and spend time**



### Urban landscapes

Copenhagen should be an attractive green and blue metropolis, a modern capital with public and private open areas characterised by landscape architectural values. Cultivated nature should always be close at hand, and there should be good connections to the green and blue areas. The landscape is a natural aspect of the city's character, and Copenhagen's parks and gardens should be world-class, also as settings for urban natural diversity. Copenhagen should be known for attention to detail, respect for history and an ability to make the most of a humble landscape. We want to experiment with new urban and landscape settings that enable new variations on urban life, landscape diversity and experimental ways of moving.

### Urban water areas

Water and the experience of water are key elements in developing the city's recreational potentials. The maritime harbour section and the coastal landscape are major attractions. As with the Harbour Baths, Amager Beach Park, and the Maritime Youth House we will enlist experimental architects and landscape architects to add new recreational areas to the city. The near disappearance of harbour activities has increased accessibility and enabled new activities in the vast harbour space. Uniquely, there are now several safe swimming areas in Copenhagen Harbour. New harbour baths and projected connections across and along the water call for experimental architecture to interpret the maritime environment, like the future Kalvebod Bølge.

### Urban development areas

Dense urban structures can promote urban life in the new urban development areas. Here, it is particularly important to consider urban life from the outset, either by expanding on existing possibilities or by creating new or temporary possibilities. Therefore, the City of Copenhagen wants to consider urban life before urban spaces, and urban spaces before buildings. In these conversion areas, many public spaces will be owned by private actors, while the city sets up requirements for the establishment and operation of new urban spaces.

” Therefore, the City of Copenhagen wants to consider urban life before urban spaces, and urban spaces before buildings

01

#### Bellahøj Open Air Theatre

Landscape architect: C.Th. Sørensen  
Completed: 1950

Bellahøj features an attractive mix of tall individual buildings and a hilly landscape with a distinct architectural expression. This highest point in Copenhagen features by tall architecture and a highly original landscaped space.

02

#### Voldparken

Husum  
Architects: Kay Fisker and Edvard Heiberg  
Landscape architect: C.Th. Sørensen  
Voldparken's characteristic feature is breaking down the classic Copenhagen building block in a park. 'Light, air and 2 rooms NOW' was the slogan for these dwellings in the north-western part of the city.

03

#### Amager Beach Park

Architect: Hasløv & Kjærsgaard  
Completed: 2005  
Amager Beach Park is a grand addition to the Copenhagen coast line. The project creates both a functioning landscape and a design that refers to the Copenhagen city parks in scale and detailing.





01



03



02



### Kongens Enghave

On Frederiksholm in Kongens Enghave, a successful symbiosis of lake-side allotment gardens and National Romantic housing from the 1920s and 30s. The gardens are listed and thus preserved for posterity. A beautiful example of the Copenhagen atmosphere and scale and an urban space of high architectural quality that combines the aesthetics and functions of urban life.





**Sluseholmen and Bådklubben Valby**  
Sluseholmen represents a holistic concept for urban development and new housing while experimenting with the transitions between city and water, in this case, the canals and harbour space. One feature that promotes the Copenhagen character is the close relationship with Bådklubben Valby (Valby Boating Association) and its waterfront allotment houses. The area between the boating association and the houses forms an original urban space that mediates the shift in scale and two radically different population segments and lifestyles.



## INITIATIVES/

URBAN SPACE PLANNING

URBAN LIFE SCORECARD

LIGHTING STRATEGY

NEW PARKS

POCKET PARKS AND GREEN LINKS

### Urban space planning

With *Copenhagen Urban Space Action Plan* the City of Copenhagen introduces new methods and processes for improving urban spaces in the existing city and taking a systematic approach to urban spaces in the urban development areas. A typology with four urban space categories guides the planning of an effective urban space hierarchy. Urban development plans for Copenhagen's development areas are based on the overall plans for the individual areas. These plans are developed in cooperation with the affected building clients, which ensures a broad investigation of the possibilities in an area. In this process, the City seeks to ensure that the qualities of the urban space support the visions for the area's architectural, landscape and functional properties.

### Urban life scorecard

*A Metropolis for People* presents the City's vision and goals for urban life and describes the efforts taken to further the goals. In order to follow up on the goals in this effort, the City is developing an urban life scorecard. By monitoring the development of urban life and evaluating the City's urban space projects we wish to develop the architectural elements that form the physical setting for the city's life. Urban space projects will be assessed based on quality criteria as well as statistical data and surveys. Additionally, all important urban space projects will be reviewed and discussed in the Project Forum of the Technical and Environmental Administration.



01



02

01

**Carlsberg visualisation**

Competition 2007

Architect: Entasis

On the Carlsberg site, old architectural elements clash with new. Informal urban spaces arise where urban life can unfold in a wide variety of ways.

02

**Tietgenkollegiet, Ørestad**

Architect: Lundgaard &amp; Tranberg

Completed: 2006

In Ørestad North, a completely modern urban space has been developed that combines various functions as the basis for a diverse urban life.

03

**Charlotte Ammundsen Square**

Landscape architect: 1:1 Landskab

Architect: Mogens Morgen

Completed: 2008

Together with the citizens and with financial support from the Danish Foundation for Culture and Sport Facilities, the City of Copenhagen has established an expressive urban space with new facilities for movement and activity.



03

### Lighting strategy

Lighting makes us feel safe in the city and stay later in the urban space. It helps set the stage for night life and the night-time space and offers an important means of strengthening and expanding urban life in Copenhagen. The City of Copenhagen has drawn up a lighting strategy that is followed up with an action plan. Citizens and users should feel safe anytime, night or day, as they move about the city. Good basic lighting should help us see and be seen in the dark.

### New parks

Over the past 10-15 years, the City of Copenhagen has established or renewed green belts in Vesterbro, Nørrebro and Østerbro, including the Harbour Park, Prags Boulevard, Sønder Boulevard and Nørrebro Park. In coming years, additional parks will be established, also in neighbourhoods with few green areas. For example, the projects Superkilen and Kvarterpark Nordvest are underway. Amager Beach Park is another example of a recreational park landscape that has given eastern Amager a major attraction and the city a new recreational area.

### Pocket parks and green links

In order to create more green spaces in built-up residential areas, the City of Copenhagen has developed a plan for establishing pocket parks in vacant lots. In addition to creating tiny urban oases, this format offers an excellent setting for experimental landscape architecture on a small scale. Additionally, a number of green links and bicycle routes are being established to enhance access to the green areas, and close to 3,000 new trees are being planted. Overall, this effort will help make the city greener.

01

#### The green bicycle route/Åbuen

Landscape architect: Schønher

Landskab

Architect: Dissing+Weitling

Completed: 2008

The foot and bicycle bridge that crosses Ågade forms an elegant link between Nørrebro Park and the gardens of the Faculty of Life Sciences, University of Copenhagen.

02

#### Sønder Boulevard, renewal

Landscape architect: SLA

Completed: 2007

Sønder Boulevard has undergone a transformation that respects the unique character of the urban space. Vesterbro residents have been involved in the decision-making processes to shape a solution that meets both functional and aesthetic requirements.

03

#### Nørrebro Park, renewal

Architects: Steen Høyer and GHB

Landskabsarkitekter

Completed: 2007

Nørrebro Park has undergone a major urban renewal process after a large-scale conceptual competition. The park now has a consistent concept as well as new plants, topography and design elements.





01



02



03



## HERE AND NOW/

We want to promote urban life in new areas, among other things by focusing on the impact of architectural elements on urban life. We will evaluate and learn from the potentials of the landscapes and urban spaces of the existing development areas. If these evaluations point to needs, we can strive to add new functions, new architecture and new landscape designs to improve conditions for urban life.









## 04 PROCESSES

### WE WANT TO DEVELOP AND FACILITATE PROCESSES THAT ENSURE ARCHITECTURAL QUALITY AND SUSTAINABLE SOLUTIONS

Any architectural assignment in Copenhagen is a challenge to find the best possible and most sustainable solution. One key method is to review the assignment from as many angles as possible. Here, the competition institution in Danish and European construction provides a good basis.

The City of Copenhagen will intensify the use of processes that help us choose the highest possible architectural quality and the most sustainable solutions. This applies to aesthetics, function and construction technique and in relation to the city's connectivity. By constantly focusing on choosing the best architectural solutions we will also be picking the best and most talented Danish and international construction, urban planning and landscape architects.

When the assignment suggests it, young, talented yet inexperienced architectural firms should receive wild cards for competitions and workshops. We consider this promotion of the talent base a key part of the architectural policy in order to secure tomorrow's talent. Citizen dialogues in close collaboration with the city's local committees are another key aspect that stimulates the creative processes and the popular support.

It is crucial to continue to develop the creative processes and instruments. In this development process we need to engage in partnerships with educational institutions, professional institutions and research environments. These networks should be expanded on an ongoing basis, also in an international context.



**FOCUS AREAS/**

URBAN SUSTAINABILITY

ARCHITECTURAL CHALLENGES

ARCHITECTURAL COMPETITIONS

ARCHITECTURAL ADVISORS

ARCHITECTURAL DEBATES

NETWORKS AND COOPERATION

**Urban sustainability**

Copenhagen wants to be one of the world's leading sustainable cities, thriving economically, socially and environmentally. We aim to make Copenhagen the global Environmental Metropolis as a model and an inspiration for cities the world over. Hence, the sustainability of all new urban development projects must be assessed. This should be a key theme in the dialogue with project developers from the initial idea until a new residential area has been completed. Sustainability is expressed in many different ways. A key task for planners, architects and landscape architects will be to integrate sustainability in architecture in the best way possible, making it a feature that heightens the architectural expression.

**Architectural challenges**

All architectural assignments and challenges of any significance should be assessed from several points of view. This may be achieved through competitions or, in some cases, public or invited workshops that involve politicians, local committees, residents and users. In each case, the City of Copenhagen will assess which competition format or other creative process is the most appropriate for the assignment in question. The goal is to arrive at the right project, the right idea or the right concept for the given assignment and its location.

**” All architectural assignments and challenges of any significance should be assessed from several points of view**

**” A key task for planners, architects and landscape architects will be to integrate sustainability in architecture in the best way possible, making it a feature that heightens the architectural expression**

**Nordhavn**

Competition 2009

Architects: COBE, SLETH and Rambøll

The development and conversion of Nordhavnen in the northern harbour was the topic of an open international architectural competition with more than 200 participants. A team of young architects and landscape architects won the competition with a project that combines an urban and landscape strategy with original traffic concepts and action plans for ensuring sustainability.





**Architectural competitions**

The overriding objective must always be to develop creative processes, architectural competitions, programmes, and tools that facilitate the architecturally sublime. Some competitions place a very high priority on construction feasibility and reliability of delivery, while others aim for the unexpected and surprising. In yet other competition formats, the main emphasis is on the dialogue with the residents and users. We must ensure that competition programmes and assessments consider both building architecture and landscape architecture in the overall brief for architectural competitions or creative workshops.

**Architectural advisors**

We must ensure that Copenhagen's urban spaces and buildings are designed by the best Danish and foreign architectural firms. We should also ensure that new and young architectural firms have a chance to prove themselves as participants in the city's development. This talent base constitutes the city's future advisors.

**Architectural debates**

The debate about Copenhagen's architecture in the general public and in the media – daily newspapers as well as trade journals – is essential, both nationally and internationally. A professional and general debate about the city's buildings, urban spaces and design is a vital element of the city's architectural policy. In extension of the City's communication of political goals, there is a longstanding tradition for publications on urban architecture. This effort is to be maintained and strengthened.

**Networks and cooperation**

The City of Copenhagen should expand and develop its national and international networks. The cooperation with the Danish schools of architecture and educational and research institutions that work with aesthetics, functions, construction techniques and urban spaces should have a high priority. An important focus area will be to pursue sustainability as an integral part of the architectural solution.

**” We must ensure that competition programmes and assessments consider both building architecture and landscape architecture**

**” We should also ensure that new and young architectural firms have a chance to prove themselves as participants in the city's development**





**Developing Nordhavn**  
 In connection with the competition for the development of the city's northern harbour, Nordhavn, various types of citizen dialogue have been tested, including two workshops on urban life and sustainability, respectively.







#### **Marmormøllen and Langelinie Spidsen**

The American architect Steven Holl's winning proposal for new high-rises on Marmormøllen and Langelinie Spidsen. For environmental reasons, both buildings are used for business purposes, but cultural activities have also been incorporated. The two buildings are connected by a high bridge, partly to provide a link to Nordhavn Station and partly to provide enough clearance for the cruise liners. The bridge design interprets Copenhagen Harbour as a former workplace and an example of new connections characterised by high architectural quality.

**INITIATIVES/**SUSTAINABILITY IN CONSTRUCTION  
AND URBAN DEVELOPMENT

PROGRAMMING

COMPETITIONS

THE TALENT BASE

ARCHITECTURE AWARDS

THEME BOOKLETS ON ARCHITECTURE  
POLICY

COPENHAGEN X

NETWORKS AND COOPERATION

**Sustainability in construction  
and urban development**

The City of Copenhagen has developed tools and guidelines to help architects, advisors, planners and politicians assess sustainability in architecture and urban development. This includes guidelines for environmental concerns in construction (*Miljø i byggeri og anlæg*) and sustainability concerns (*De 14 bæredygtighedshensyn*). The latter is a set of tools for ensuring that sustainability is included at various levels in the local planning processes for all major new construction projects.

**Programming**

For every project, a programme should be drawn up that brings together the right resources and professionals. It is important to include a variety of professionals with relevant competences. In some cases it will also be relevant to include the citizens. In that connection it will be essential to use the City's future strategy for citizen dialogue. Here, the citizens' knowledge and contributions are considered key to developing projects, qualifying decisions and achieving ownership. We have good experiences with local committees or citizen groups acting as jury members in invited competitions and workshops.





01



02

01  
**Israels Plads**  
 Competition 2008  
 Architects: Birk Nielsen Landscape architects, COBE, Niras and sculptor Morten Stræde  
 An open workshop about Israel Square led to a striking architectural element. A new 'sheet' brings the functional elements together and forms a whole. To round off the square, the sheet is corbelled over Ørsted Park.

02  
**Købmagergade**  
 Competition 2008  
 Architect: Polyform  
 Kultortvet is a unique urban space, shaped by the old part of the city and a new, modern building, one of finest additions of modern buildings in the city centre. The quality of this urban space is enhanced by the extension of the new pavement on Købmagergade into a new coherent surface on Kultortvet.

### Competitions

Architectural competitions and programme development should be a means of achieving outstanding quality. Architectural competitions may use a variety of formats: open, by invitation, parallel assignments, workshops, and countless other variations.

In architectural competitions the participants compete independently within the framework of a common programme. That ensures a broad exploration of the character of the task and sometimes leads to solutions that we had not predicted when we prepared the brief and the programme. In these processes, the dialogue is absent, but the outcome may be an unexpected solution. And then, the dialogue can begin.

### The talent base

We should have more open architectural competitions where anybody can take part. This gives young talents a chance to compete on equal footing with the well-established. In many cases, this is where new and young architectural firms have had their breakthrough.

The City of Copenhagen seeks to give new and young architectural firms a chance to prove themselves. A city the size of Copenhagen and with significant building activity should make room for new talents while ensuring that the best architectural firms in Denmark and abroad are responsible for plans and buildings in the city. Whenever possible, young and less tested architectural firms receive 'wild cards' to take part in invited competitions and workshops for smaller assignments.

Since 2007, Denmark has been involved in the European (EU) architectural competition Europan for architects under 40 years of age. In 2008, the Danish cities of Copenhagen, Vejle and Herning participated. Europan is held every two years and is a big success with up to 1,000 entrants. In the time between the competition preparations, there is a high degree of professional exchange between the involved countries. A very valuable bonus effect.

#### **Europan 09 in Ørestad**

Competition 2007

Architect: Eva Luque García

Europan is a joint European event where young architects compete across various cities. In Europan 09 the Spanish architect Eva Luque García won the competition in Ørestad with a project that interprets the Danish and Copenhagen tradition and adds Spanish façade typologies.



# EUROPEAN 10





### Architecture awards

'Prisbelønning af gode og smukke bygninger samt bymiljøer i Københavns Kommune' (Awards for good and beautiful buildings and urban environments in Copenhagen) is the official title of the City's award programme which has been in place since 1902, and every year the City of Copenhagen rewards 5-10 recent architectural works of outstanding quality.

These architecture awards may be the earliest and, thus, the oldest architecture policy process in the city's history. A majority of politicians assess the works together with civil servants and architectural experts appointed by the Architects' Association of Denmark and the Danish Association of Consulting Engineers. The politicians are always in the majority, which requires the experts to convey their professional points of view in a way that convinces the politicians as professional laypeople.

The award programme is subject to ongoing renewal in terms of topics and content, but the key idea about the good example and the political and professional debate is maintained.

### Theme booklets on architecture policy

In addition to its role as public authority and advisor, the City of Copenhagen plays an important role in inspiring architecture. Thus, over the years, the City has published a series of theme booklets on architecture policy that exemplify our architecture policy in specific areas. An extensive list of publications is included in the 'Appendix'.

### Copenhagen X

Since 2002, the City of Copenhagen has supported Copenhagen X, a project that addresses urban development in the greater Copenhagen area. Through exhibitions, publications, online activities, etc., new projects and ongoing urban developments are presented in a form that speaks to professionals as well as the general public. Debate events and guided city tours serve as a forum for dialogue between professionals and laypeople. Copenhagen X is attached to the Danish Architecture Centre and funded by the City of Copenhagen, the City of Frederiksberg, and Realdania.

### Networks and cooperation

There are countless and varied possibilities for engaging in cooperation and networks. It is an important discipline to prioritise what types of networks – and which specific partnerships – are most relevant, nationally as well as internationally. This prioritisation requires an overall mapping effort.



01

01

**The Maritime Youth House**

Architect: PLOT

Award: 2004

The architectural approach applied in the Maritime Youth House addresses an environmental problem while simultaneously creating an exciting encounter of urban life, sports and a recreational institution.



02

02

**Åbuen**

Architect: Dissing+Weitling

Award: 2009

Åbuen is an important part of the Nørrebro Bicycle Route. It crosses Ågade in an arc that forms a natural extension of the winding paths of the bicycle route.



03

03

**Stokhusgade**

Architect: Holscher Arkitekter

Award: 2008

Infill is a unique discipline where the goal is to combine new and old in a way that is mutually enriching. In Stokhusgade, this light, elegant and vertical building highlights the gravity and horizontal lines of the surrounding context.



## HERE AND NOW/

We will cooperate with architects and building clients to reach our goals. Copenhagen City of Architecture is the new framework for this essential dialogue process. The focus areas of the architecture policy will be specified through additional strategies and guidelines for specific topics (see 'Appendix') and through the ongoing dialogue about specific projects as we reach the goals together.









# APPENDIX

## POLICIES, STRATEGIES AND GUIDELINES/

The following is a list of the plans, policies, strategies and guidelines that affect the architecture policy: plans and policies that form the framework for the architecture policy, strategies that define directions and goals, and guidelines that elaborate on and supplement the architecture policy.

### **Plans and policies that form the framework for the architecture policy:**

*Den tænkende storby. Københavns Kommuneplan 2009*

*Copenhagen Carbon Neutral by 2005. Copenhagen Climate Plan. Published 2009*

*A Metropolis for People. Visions and objectives for Copenhagen urban life 2015. Published 2009*

*Eco-Metropolis. Our Vision CPH 2015. Published 2007*

### **Strategies for urban spaces:**

*Lommeparker, træer og andet grønt. Published 2008*

*Natten i byens lys. Belysningsstrategi for København. Published 2007*

*Copenhagen Urban Space Action Plan. Published 2006*

### **Guidelines:**

*Miljø i byggeri og anlæg. Published 2010*

*Skilte og reklamer i København. Retningslinjer. Published 2008*

*Boligbyggeri og arkitektonisk kvalitet. Published 2004*

*Cityscape Atlas Copenhagen. Published 2003*

*Facader og skilte i København. Published 2001*

### **Evaluations:**

*Bydesign i København. Byevaluering. Published 2009*

*Bygningspræmiering. Published annually*

*The Award-winning City. Published 2003*



PHOTOS & ILLUSTRATIONS/



All photos by Kontraframe with the following exceptions:

Københavns Kommune: p. 16 (01), 17 (04/05), 41 (03), 42, 47 (02), 39 (01/02), 57, 59 (01/02), 65 (01)

Københavns Kommune/COWI: p. 59 (02)

Photographer Gitte Lottinga: p. 20-21

Seier+Seier: p. 27 (03)

Architects Lundgaard & Tranberg: p. 41 (02)

Dragør Luftfoto Aps: p. 45

Architects ONV/Photographer Per Johansen: p. 47 (01)

Lene Skytthe/CPH City & Port Development: p. 49 (01), 73 (03)

Architect Dorte Mandrup/Photographer Jens Lindhe: p. 50 (01)

DR/Photographer: Bjarne Bergius Hermansen: p. 51 (03)

Architects (C) SLA: p.65 (02)

Anders Birch/CPH City & Port Development: p. 73 (01/02)

Dissing+Weitling: p. 81 (02)

Photographer Peter Nørby: p. 81 (03)

### **Illustrations:**

Etching by Johan Jacob Bruun (section) p. 10

Architect Tony Fretton: p. 19

Architect Jean Nouvel: p. 33

Entasis/Carlsberg: p. 36, 55, 63 (01)

BIG: p. 37

Architects Lundgaard & Tranberg: p. 52 (02)

Danish Architecture Centre: p. 69 (section), 79

Architects COBE/SLETH/Rambøll: p. 71

Architect Steven Holl: p. 75

Birk Nielsen/COBE/NIRAS/  
Morten Stræde: p. 77 (01)

Architects POLYFORM: p. 77 (02)

Architect Eva Luque Garcia: p. 79 (01)



Copenhagen City of Architecture  
© City of Copenhagen 2010

Published by: Technical and Environmental  
Administration

Cover photo: Kontraframe

Project manager: Maria M. L. Nielsen

Design and layout: Cecilie Breivik Hansen

English translation: Dorte H. Silver

Print: Jønsson Grafisk

Printed in Copenhagen

The City of Copenhagen wishes to thank  
everybody involved for their contributions  
and efforts. Special thanks go to Kontraframe.



**CLIMATE  
COMPENSATED  
PAPER**  
[www.joensson.dk](http://www.joensson.dk)

