

MUSCO
We Make It Happen.



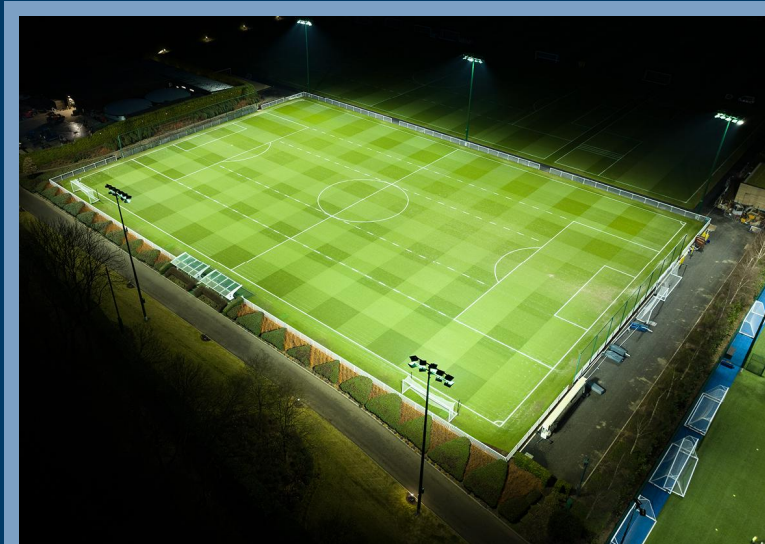
Beckett Park, Dublin, Ireland



Arsenal Training Grounds, Walthamstow, London, UK



Stryker Sports Complex, Wichita, Kansas, USA



Tottenham Hotspur FC Training Ground, Tottenham, UK

Nørrebro Parken

Copenhagen,



Sales Representative: Frederik Lundsgaard · Designed By: Isaac Sanders · Design No.: 230055D · March 06, 2026



Nørrebro Parken
Copenhagen,

LIGHTING SYSTEM

Structure/Fixture Summary

Structure ID	Structure Height	Fixt. Attachment Ht.	Fixture Qty	Fixture Type	Load	Circuit
P1-P4	15.0 m	15.0 m	3	TLC-LED-550	1.62 kW	A
4			12		6.48 kW	

Circuit Summary

Circuit	Description	Load	Fixture Qty
A		6.48 kW	12

Fixture Type Summary

Type	Circuit	Source	Wattage	Lumens	L90	L80	L70	Quantity
TLC-LED-550	A	LED 5700K - 75 CRI	540W	67,000	>120,000	>120,000	>120,000	12

Single Fixture Amperage Draw Chart

Driver Specifications (.90 min power factor)	Line Amperage Per Fixture (max draw)						
	208 (60)	220 (60)	240 (60)	277 (60)	347 (60)	380 (60)	480 (60)
Single Phase Voltage							
TLC-LED-550	3.2	3.0	2.8	2.4	1.9	1.8	1.4

Light Level Summary

Calculation Grid Summary

Grid Name	Calculation Metric	Illumination Ave					Circuits	Fixture Qty
		Ave	Min	Max	Min/Max	Min/Ave		
Blanket	Horizontal	25.15	0	192	0.00	0.00	A	12
Blanket	Max Vert Illuminance (by Light Bank)	37.63	0	302	0.00	0.00	A	12
LTW East	Horizontal	0.13	0	0	0.00	0.00	A	12
LTW East	Max Candela (by Fixture)	370.00	41	738	0.06	0.11	A	12
LTW East	Max Vertical Illuminance Metric	0.29	0	1	0.01	0.01	A	12
Soccer	Glare Rating	40.25	22	48	0.46	0.55	A	12
Soccer	Horizontal Illuminance	149.54	104	192	0.54	0.70	A	12

Guaranteed Performance: The ILLUMINATION described above is guaranteed per your Musco Warranty document.

Field Measurements: Individual field measurements may vary from computer-calculated predictions.

Electrical System Requirements: Refer to Amperage Draw Chart and/or the "Musco Control System Summary" for electrical sizing.

Installation Requirements: Results assume ± 3% nominal voltage at line side of the driver and structures located within 3 feet (1m) of design locations.



Equipment List For Areas Shown								
Structure				Fixtures				
QTY	STRUCTURE ID	SIZE	GRADE ELEVATION	ABOVE FIELD LEVEL	FIXTURE TYPE	QTY/POLE	THIS GRID	OTHER GRIDS
4	P1-P4	15.00m	-	15.00m	TLC-LED-550	3	3	0
4	Totals					12	12	0

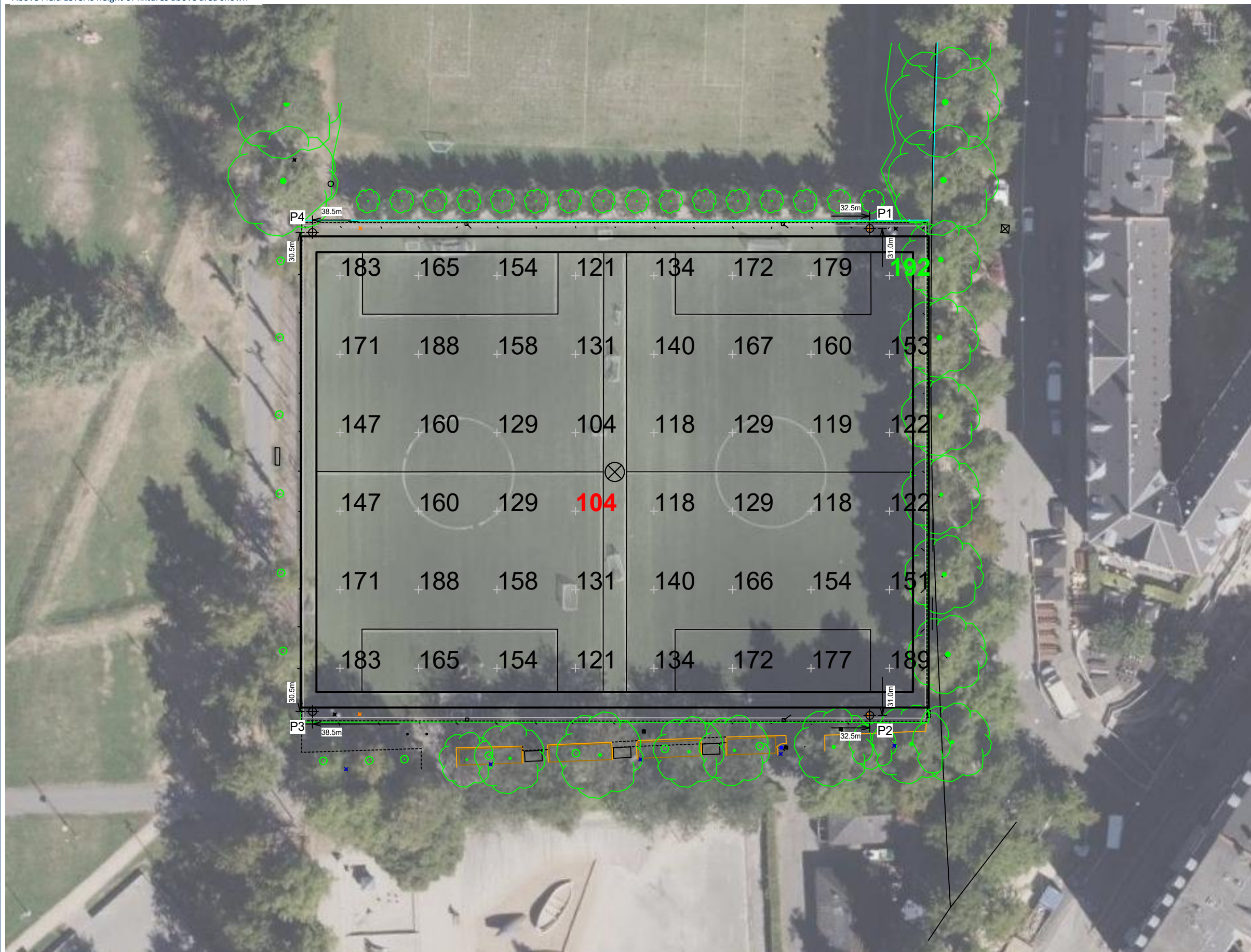
Above Field Level is height of fixtures above area shown

Nørrebro Parken

Copenhagen,

Grid Summary	
Name:	Soccer
Size:	76.0m x 56.0m
Spacing:	10.0m x 10.0m
Height:	1.0m above grade

Illumination Summary	
	MAINTAINED HORIZONTAL LUX
Entire Grid	
Guaranteed Average:	125
Scan Average:	149.54
Maximum:	192
Minimum:	104
Guaranteed Min/Avg:	0.5
Min/Avg:	0.70
Min/Max:	0.54
UG (adjacent pts):	1.34
CU:	0.90
No. of Points:	48
FIXTURE INFORMATION	
Applied Circuits:	A
No. of Fixtures:	12
Total Load:	6.48 kW

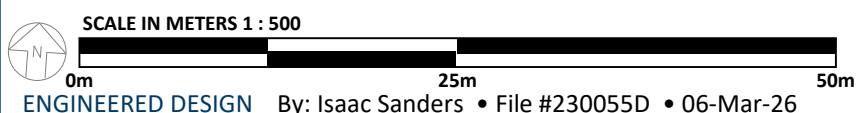


Guaranteed Performance: The ILLUMINATION described above is guaranteed per your Musco Warranty document.

Field Measurements: Individual field measurements may vary from computer-calculated predictions.

Electrical System Requirements: Refer to Amperage Draw Chart and/or the "Musco Control System Summary" for electrical sizing.

Installation Requirements: Results assume ± 3% nominal voltage at line side of the driver and structures located within 3 feet (1m) of design locations.



Pole location(s) ⊕ dimensions are relative to 0,0 reference point(s) ⊗



Not to be reproduced in whole or part without the written consent of Musco Sports Lighting, LLC. ©1981, 2026 Musco Sports Lighting, LLC.

ILLUMINATION SUMMARY

Equipment List For Areas Shown								
Structure				Fixtures				
QTY	STRUCTURE ID	SIZE	GRADE ELEVATION	ABOVE FIELD LEVEL	FIXTURE TYPE	QTY/POLE	THIS GRID	OTHER GRIDS
4	P1-P4	15.00m	-	15.00m	TLC-LED-550	3	3	0
4	Totals					12	12	0

Above Field Level is height of fixtures above area shown

Nørrebro Parken

Copenhagen,

Grid Summary	
Name:	Soccer
Size:	76.0m x 56.0m
Spacing:	10.0m x 10.0m
Height:	1.0m above grade

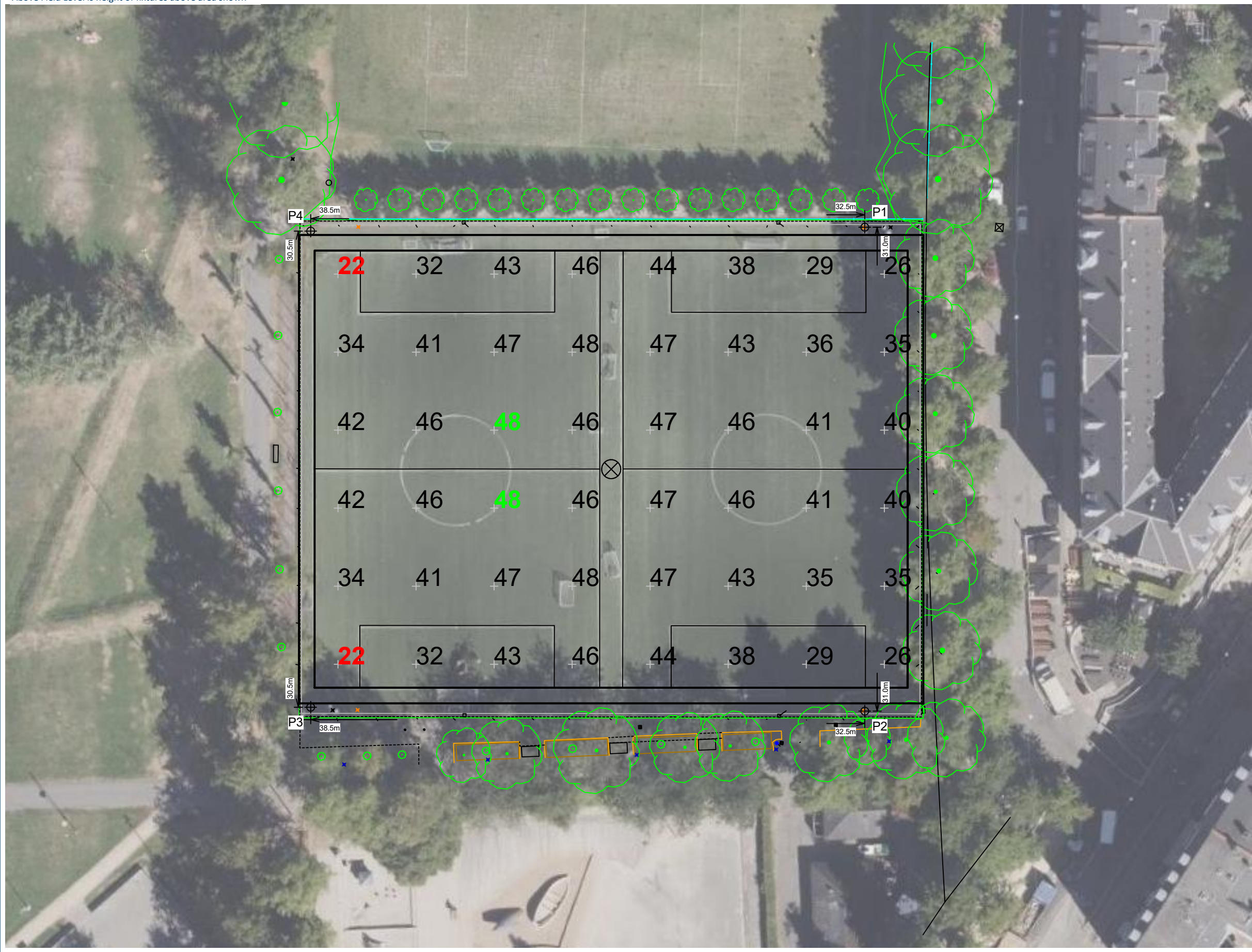
Illumination Summary	
	MAINTAINED GLARE RATING: Max Reading
Scan Average:	40.25
Maximum:	48
Minimum:	22
Min/Avg:	0.55
Min/Max:	0.46
UG (adjacent pts):	1.53
CU:	0.90
No. of Points:	48
FIXTURE INFORMATION	
Applied Circuits:	A
No. of Fixtures:	12
Total Load:	6.48 kW

Guaranteed Performance: The ILLUMINATION described above is guaranteed per your Musco Warranty document.

Field Measurements: Individual field measurements may vary from computer-calculated predictions.

Electrical System Requirements: Refer to Amperage Draw Chart and/or the "Musco Control System Summary" for electrical sizing.

Installation Requirements: Results assume ± 3% nominal voltage at line side of the driver and structures located within 3 feet (1m) of design locations.



SCALE IN METERS 1 : 500
 0m 25m 50m
 ENGINEERED DESIGN By: Isaac Sanders • File #230055D • 06-Mar-26

Pole location(s) ⊕ dimensions are relative to 0,0 reference point(s) ⊗



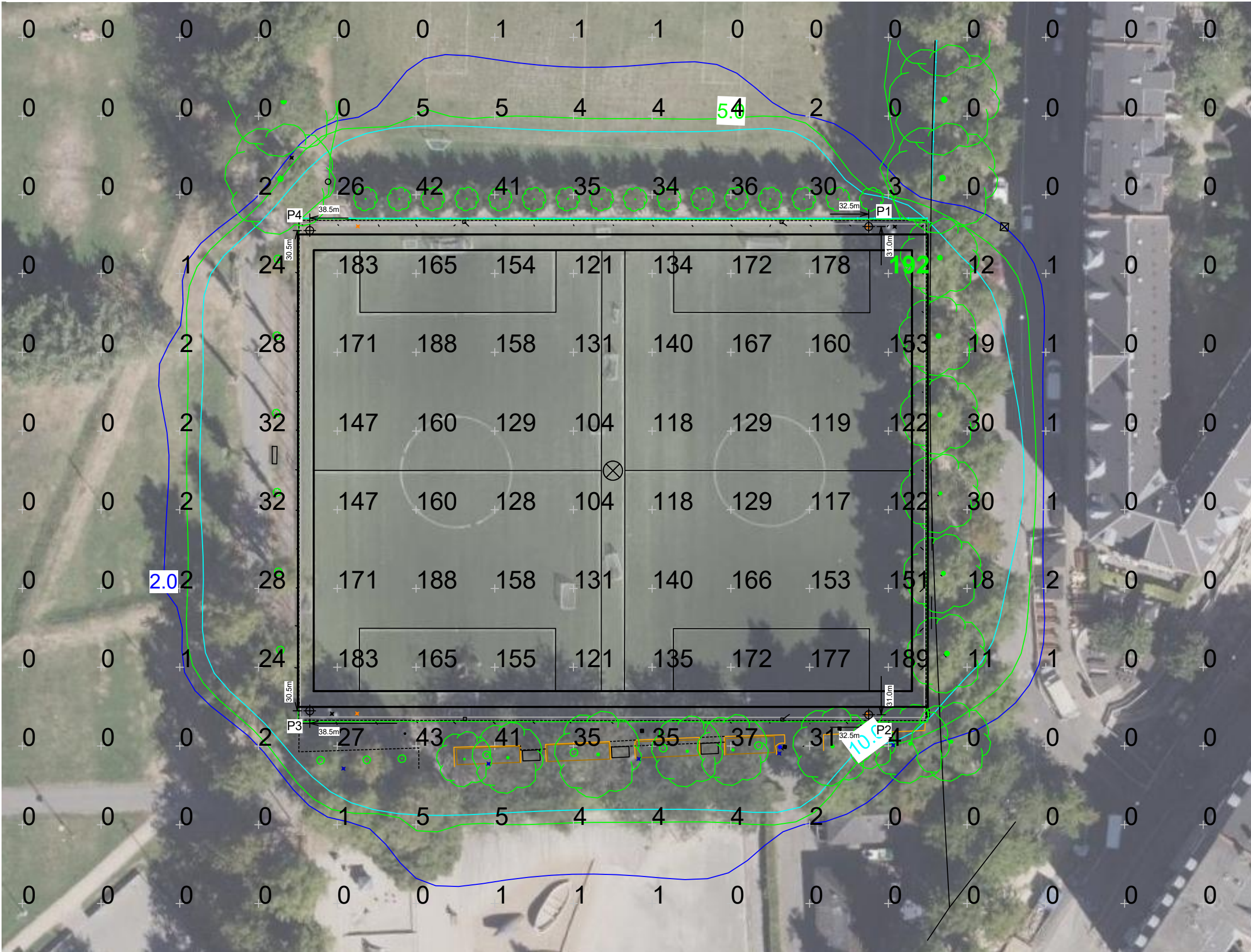
Not to be reproduced in whole or part without the written consent of Musco Sports Lighting, LLC. ©1981, 2026 Musco Sports Lighting, LLC.

ILLUMINATION SUMMARY

Equipment List For Areas Shown

Structure			Fixtures					
QTY	STRUCTURE ID	SIZE	GRADE ELEVATION	ABOVE FIELD LEVEL	FIXTURE TYPE	QTY/POLE	THIS GRID	OTHER GRIDS
4	P1-P4	15.00m	-	15.00m	TLC-LED-550	3	3	0
4	Totals					12	12	0

Above Field Level is height of fixtures above area shown



Nørrebro Parken

Copenhagen,

Grid Summary	
Name:	Blanket
Size:	76.0m x 56.0m
Spacing:	10.0m x 10.0m
Height:	1.0m above grade

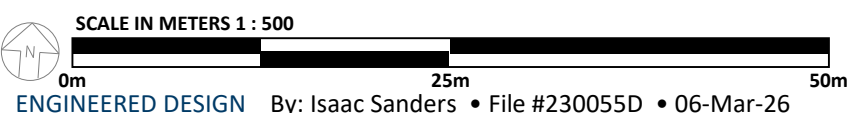
Illumination Summary		
	Entire Grid	INITIAL HORIZONTAL LUX
Scan Average:	25.15	25.15
Maximum:	192	192
Minimum:	0	0
Min/Avg:	0.00	0.00
Min/Max:	0.00	0.00
UG (adjacent pts):	500.50	500.50
CU:	1.00	
No. of Points:	320	320
FIXTURE INFORMATION		
Applied Circuits:	A	
No. of Fixtures:	12	
Total Load:	6.48 kW	

Guaranteed Performance: The ILLUMINATION described above is guaranteed per your Musco Warranty document.

Field Measurements: Individual field measurements may vary from computer-calculated predictions.

Electrical System Requirements: Refer to Amperage Draw Chart and/or the "Musco Control System Summary" for electrical sizing.

Installation Requirements: Results assume ± 3% nominal voltage at line side of the driver and structures located within 3 feet (1m) of design locations.



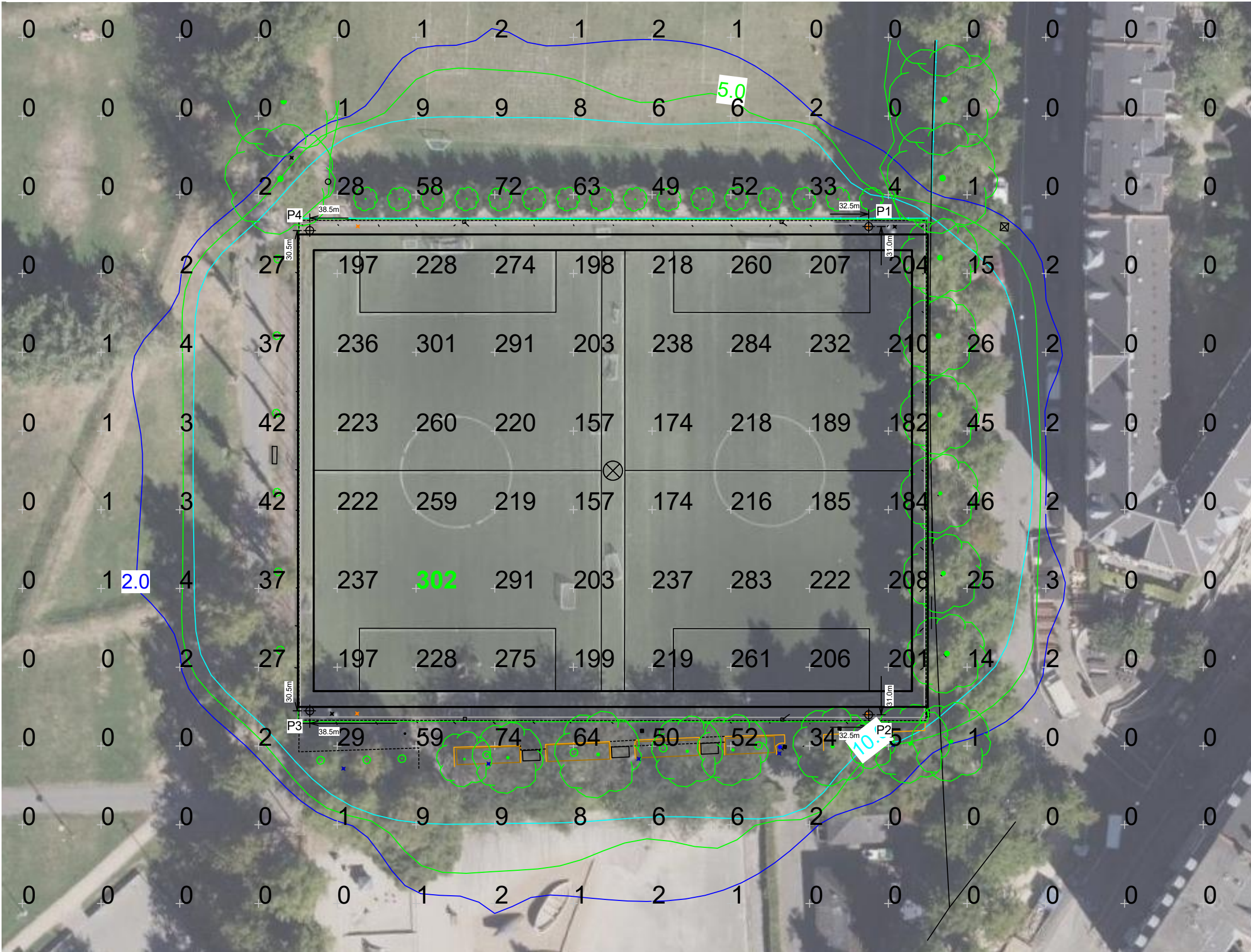
Pole location(s) ⊕ dimensions are relative to 0,0 reference point(s) ⊗



Equipment List For Areas Shown

Structure			Fixtures					
QTY	STRUCTURE ID	SIZE	GRADE ELEVATION	ABOVE FIELD LEVEL	FIXTURE TYPE	QTY/POLE	THIS GRID	OTHER GRIDS
4	P1-P4	15.00m	-	15.00m	TLC-LED-550	3	3	0
4	Totals					12	12	0

Above Field Level is height of fixtures above area shown



Nørrebro Parken

Copenhagen,

Grid Summary

Name: Blanket
 Size: 76.0m x 56.0m
 Spacing: 10.0m x 10.0m
 Height: 1.0m above grade

Illumination Summary

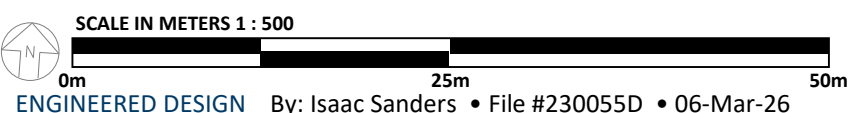
	Entire Grid	INITIAL MAX VERTICAL LUX
Scan Average:	37.63	37.63
Maximum:	302	302
Minimum:	0	0
Min/Avg:	0.00	0.00
Min/Max:	0.00	0.00
UG (adjacent pts):	123.98	123.98
CU:	1.00	
No. of Points:	320	320
FIXTURE INFORMATION		
Applied Circuits:	A	
No. of Fixtures:	12	
Total Load:	6.48 kW	

Guaranteed Performance: The ILLUMINATION described above is guaranteed per your Musco Warranty document.

Field Measurements: Individual field measurements may vary from computer-calculated predictions.

Electrical System Requirements: Refer to Amperage Draw Chart and/or the "Musco Control System Summary" for electrical sizing.

Installation Requirements: Results assume ± 3% nominal voltage at line side of the driver and structures located within 3 feet (1m) of design locations.



Pole location(s) ⊕ dimensions are relative to 0,0 reference point(s) ⊗



Equipment List For Areas Shown

Structure			Fixtures					
QTY	STRUCTURE ID	SIZE	GRADE ELEVATION	ABOVE FIELD LEVEL	FIXTURE TYPE	QTY/POLE	THIS GRID	OTHER GRIDS
4	P1-P4	15.00m	-	15.00m	TLC-LED-550	3	3	0
4	Totals					12	12	0

Above Field Level is height of fixtures above area shown

Nørrebro Parken

Copenhagen,

Grid Summary	
Name:	LTW East
Size:	76.0m x 56.0m
Spacing:	5.0m x 5.0m
Height:	1.5m above grade

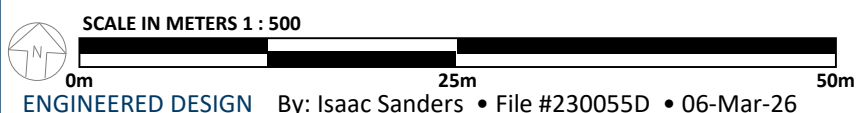
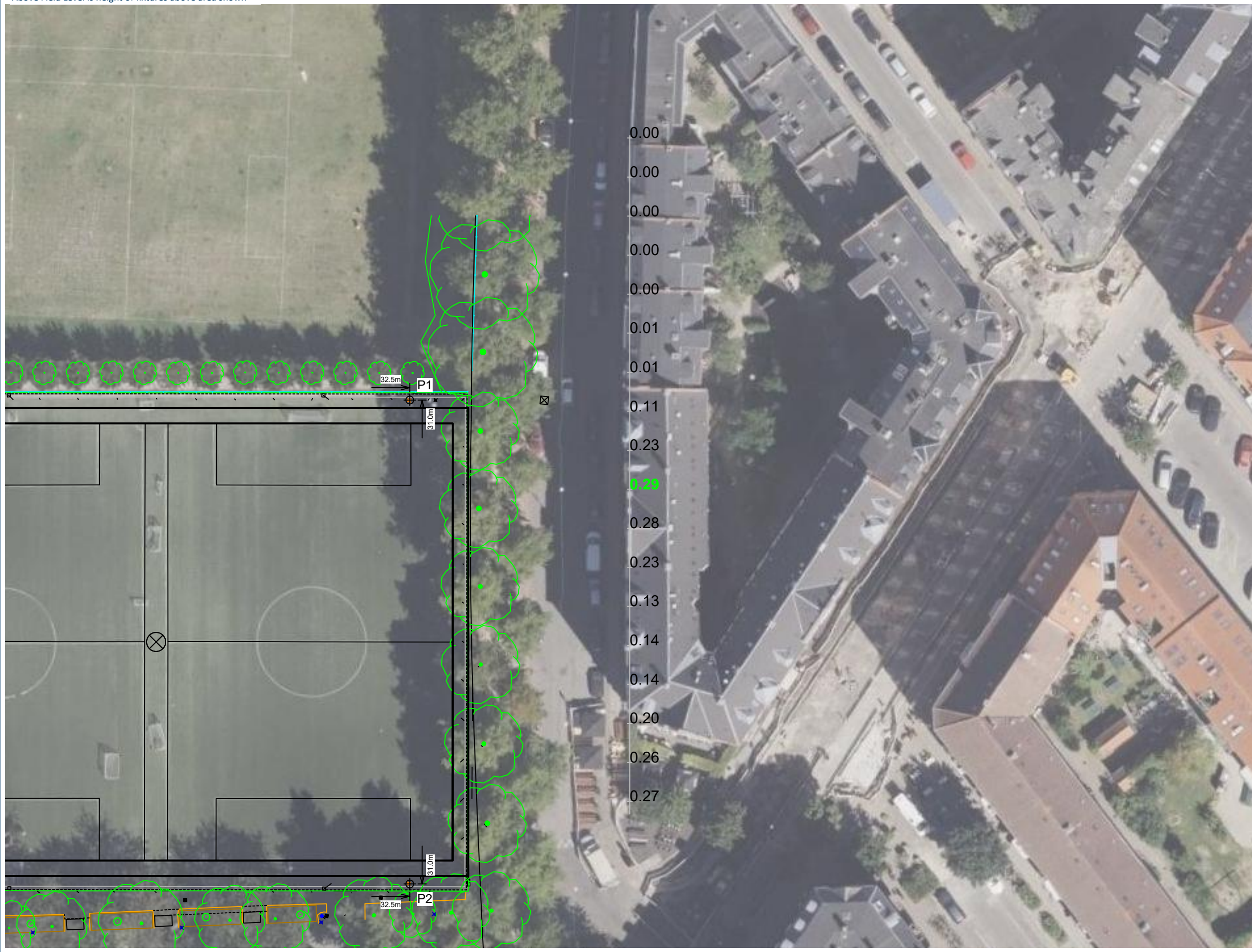
Illumination Summary		
	Entire Grid	INITIAL HORIZONTAL LUX
Scan Average:	0.13	0.13
Maximum:	0	0
Minimum:	0	0
Min/Avg:	0.00	0.00
Min/Max:	0.00	0.00
UG (adjacent pts):	0.00	0.00
CU:	0.00	
No. of Points:	18	18
FIXTURE INFORMATION		
Applied Circuits:	A	
No. of Fixtures:	12	
Total Load:	6.48 kW	

Guaranteed Performance: The ILLUMINATION described above is guaranteed per your Musco Warranty document.

Field Measurements: Individual field measurements may vary from computer-calculated predictions.

Electrical System Requirements: Refer to Amperage Draw Chart and/or the "Musco Control System Summary" for electrical sizing.

Installation Requirements: Results assume ± 3% nominal voltage at line side of the driver and structures located within 3 feet (1m) of design locations.



Pole location(s) ⊕ dimensions are relative to 0,0 reference point(s) ⊗



Equipment List For Areas Shown

Structure				Fixtures				
QTY	STRUCTURE ID	SIZE	GRADE ELEVATION	ABOVE FIELD LEVEL	FIXTURE TYPE	QTY/POLE	THIS GRID	OTHER GRIDS
4	P1-P4	15.00m	-	15.00m	TLC-LED-550	3	3	0
4	Totals					12	12	0

Above Field Level is height of fixtures above area shown

Nørrebro Parken

Copenhagen,

Grid Summary

Name: LTW East
Size: 76.0m x 56.0m
Spacing: 5.0m x 5.0m
Height: 1.5m above grade

Illumination Summary

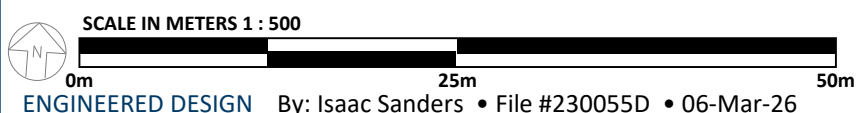
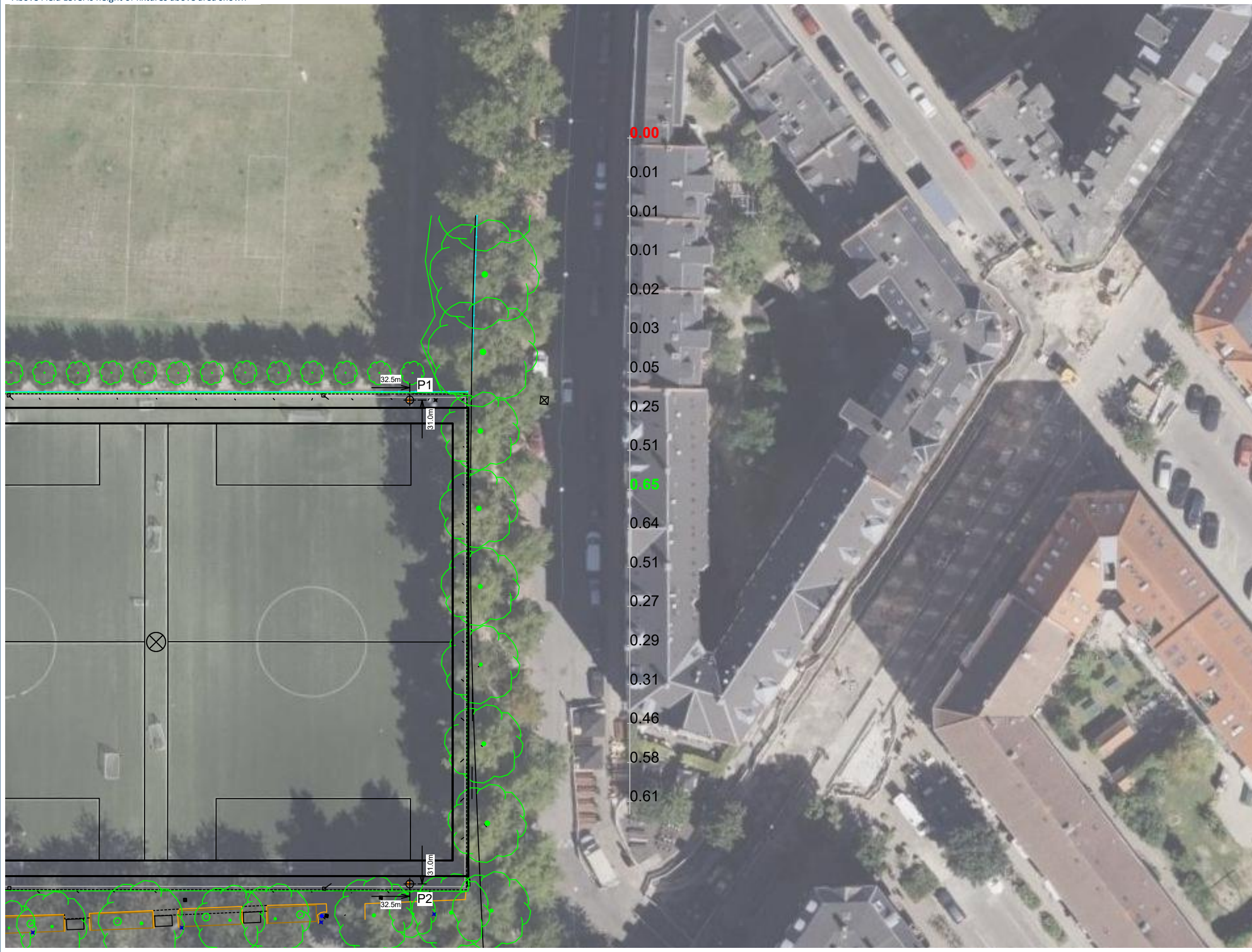
	Entire Grid	INITIAL MAX VERTICAL LUX
Scan Average:	0.29	0.29
Maximum:	1	1
Minimum:	0	0
Min/Avg:	0.01	0.01
Min/Max:	0.01	0.01
UG (adjacent pts):	0.00	0.00
CU:	0.00	
No. of Points:	18	18
FIXTURE INFORMATION		
Applied Circuits:	A	
No. of Fixtures:	12	
Total Load:	6.48 kW	

Guaranteed Performance: The ILLUMINATION described above is guaranteed per your Musco Warranty document.

Field Measurements: Individual field measurements may vary from computer-calculated predictions.

Electrical System Requirements: Refer to Amperage Draw Chart and/or the "Musco Control System Summary" for electrical sizing.

Installation Requirements: Results assume ± 3% nominal voltage at line side of the driver and structures located within 3 feet (1m) of design locations.



Pole location(s) ⊕ dimensions are relative to 0,0 reference point(s) ⊗



Not to be reproduced in whole or part without the written consent of Musco Sports Lighting, LLC. ©1981, 2026 Musco Sports Lighting, LLC.

ILLUMINATION SUMMARY

Equipment List For Areas Shown

Structure			Fixtures					
QTY	STRUCTURE ID	SIZE	GRADE ELEVATION	ABOVE FIELD LEVEL	FIXTURE TYPE	QTY/POLE	THIS GRID	OTHER GRIDS
4	P1-P4	15.00m	-	15.00m	TLC-LED-550	3	3	0
4	Totals					12	12	0

Above Field Level is height of fixtures above area shown

Nørrebro Parken

Copenhagen,

Grid Summary	
Name:	LTW East
Size:	76.0m x 56.0m
Spacing:	5.0m x 5.0m
Height:	1.5m above grade

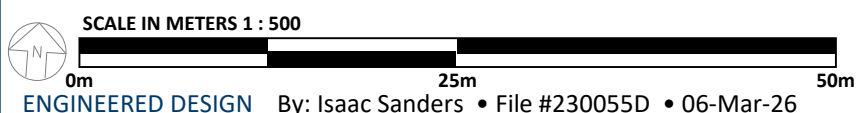
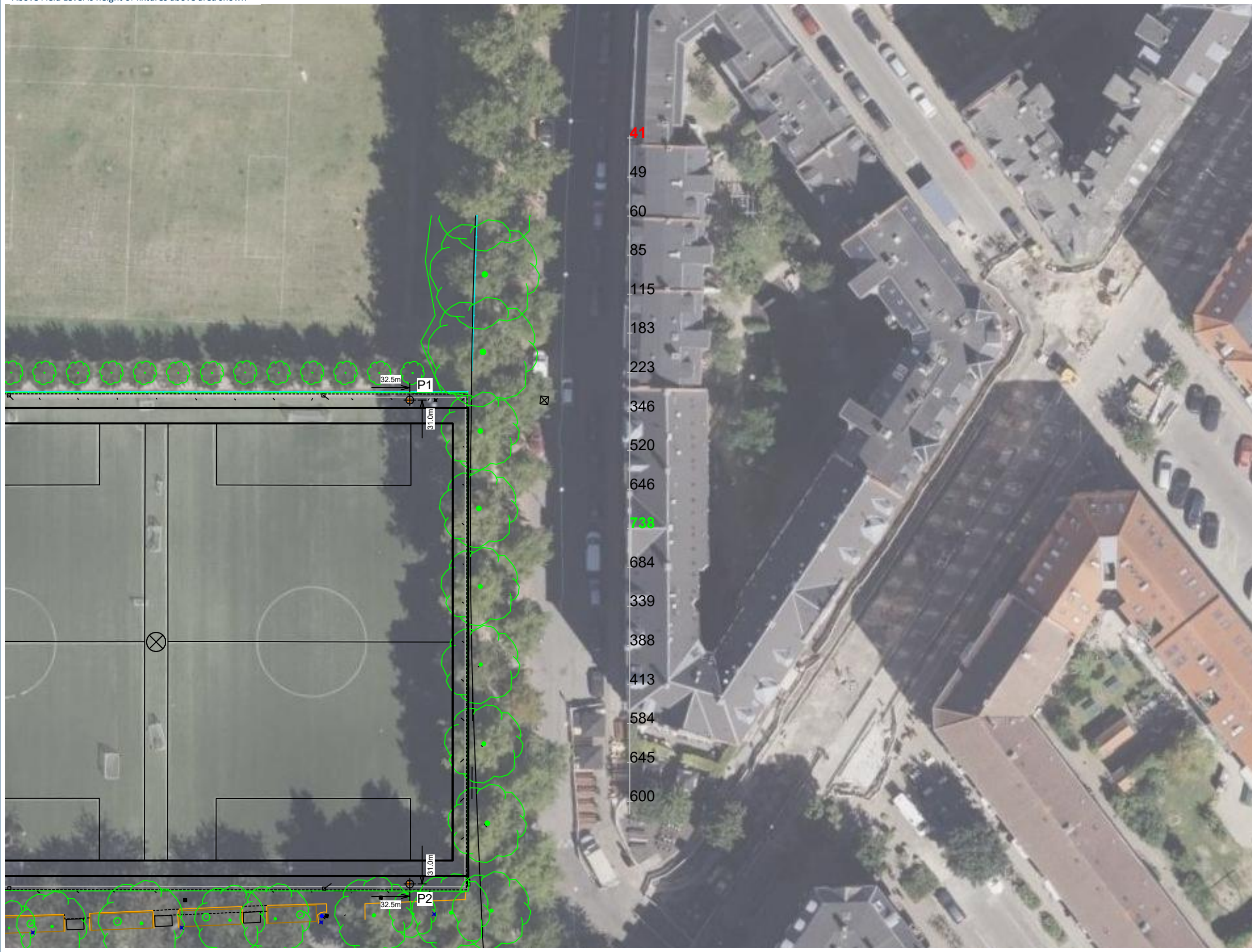
Illumination Summary		
	Entire Grid	INITIAL MAX CANDELA (PER FIXTURE)
Scan Average:	370.00	370.00
Maximum:	738	738
Minimum:	41	41
Min/Avg:	0.11	0.11
Min/Max:	0.06	0.06
UG (adjacent pts):	0.00	0.00
CU:	0.00	
No. of Points:	18	18
FIXTURE INFORMATION		
Applied Circuits:	A	
No. of Fixtures:	12	
Total Load:	6.48 kW	

Guaranteed Performance: The ILLUMINATION described above is guaranteed per your Musco Warranty document.

Field Measurements: Individual field measurements may vary from computer-calculated predictions.

Electrical System Requirements: Refer to Amperage Draw Chart and/or the "Musco Control System Summary" for electrical sizing.

Installation Requirements: Results assume ± 3% nominal voltage at line side of the driver and structures located within 3 feet (1m) of design locations.



Pole location(s) ⊕ dimensions are relative to 0,0 reference point(s) ⊗



Nørrebro Parken

Copenhagen,

Equipment Layout

INCLUDES:

- Eval
- Soccer

Electrical System Requirements: Refer to Amperage Draw Chart and/or the "Musco Control System Summary" for electrical sizing.

Installation Requirements: Results assume ± 3% nominal voltage at line side of the driver and structures located within 3 feet (1m) of design locations.

Equipment List For Areas Shown

QTY	Structure			Fixtures		
	STRUCTURE ID	SIZE	GLOBAL ELEVATION	ABOVE GLOBAL LEVEL	FIXTURE TYPE	QTY/POLE
4	P1-P4	15.00m	-	15.00m	TLC-LED-550	3
4	Totals					12

Above Global Level is height of fixtures above design (0,0,0)

Single Fixture Amperage Draw Chart

Driver Specifications (.90 min power factor)	Line Amperage Per Fixture (max draw)						
	208 (60)	220 (60)	240 (60)	277 (60)	347 (60)	380 (60)	480 (60)
TLC-LED-550	3.2	3.0	2.8	2.4	1.9	1.8	1.4



SCALE IN METERS 1 : 500



Pole location(s) ⊕ dimensions are relative to 0,0 reference point(s) ⊗

ENGINEERED DESIGN By: Isaac Sanders • File #230055D • 06-Mar-26



Not to be reproduced in whole or part without the written consent of Musco Sports Lighting, LLC. ©1981, 2026 Musco Sports Lighting, LLC.

EQUIPMENT LAYOUT